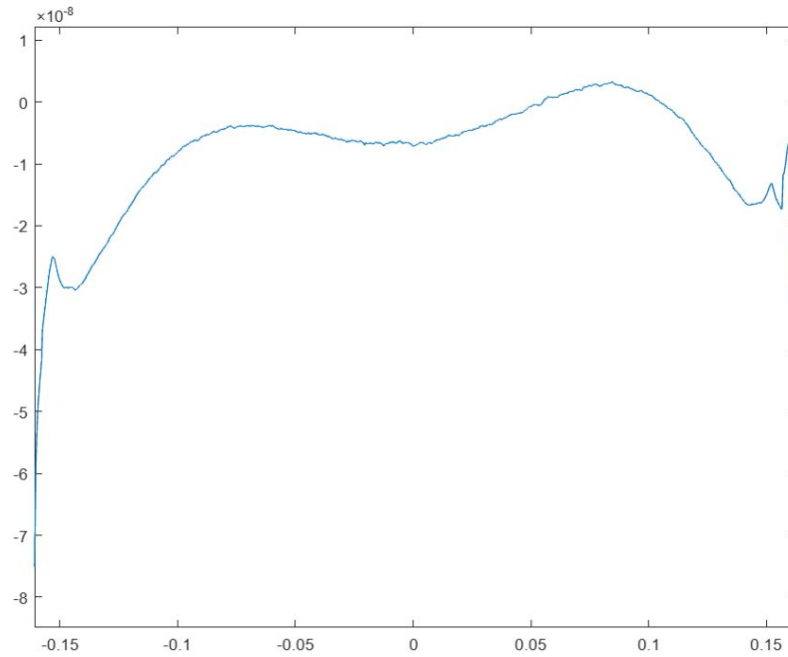


Raw Cross Section of Plume With Potentially Unphysical Part

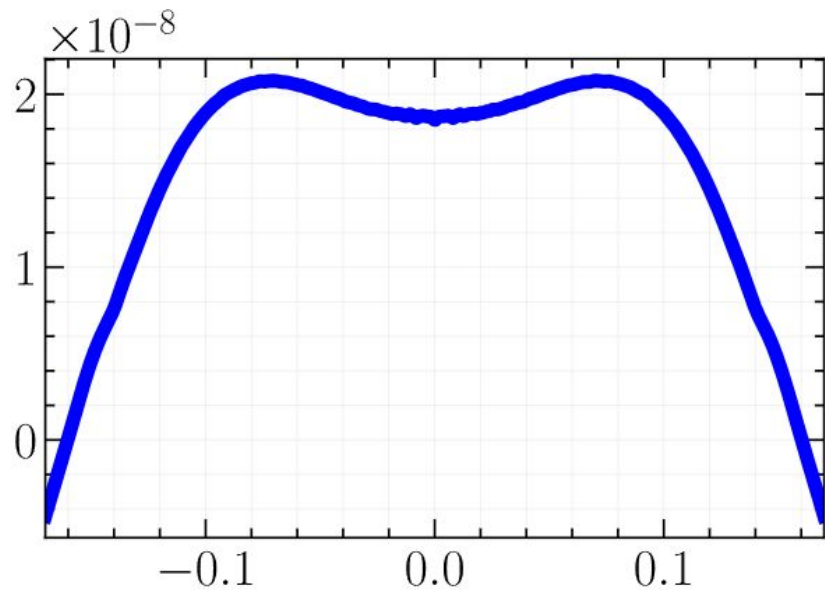


Intermediate steps

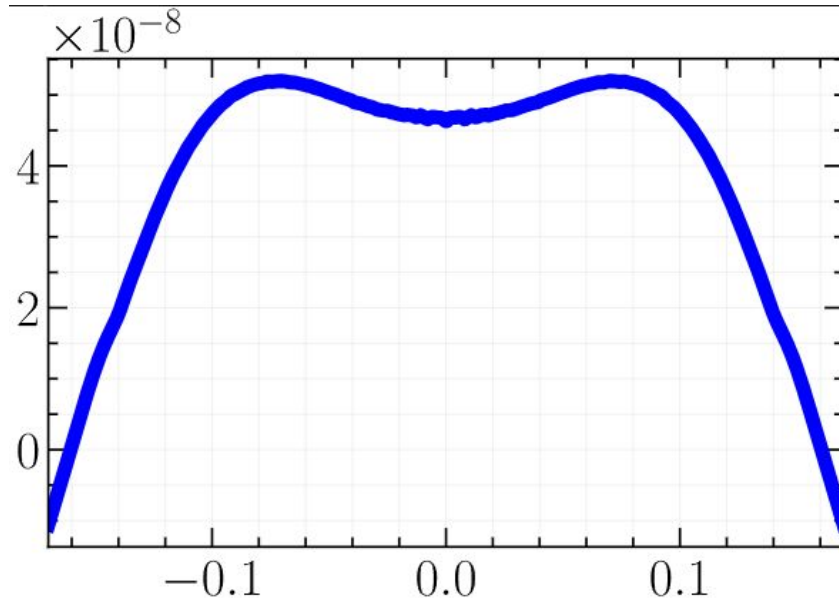
- Cut off the “unphysical part”
- Remove tilt
- Multiply by rescale factors for ITM /ETM (0.6 for ITM and 1.5 for ETM)
- Extrapolate the part cut off by looking at the roll-off part immediately before the cut off
- Used a quadratic function for extrapolating

Proposed ITM & ETM

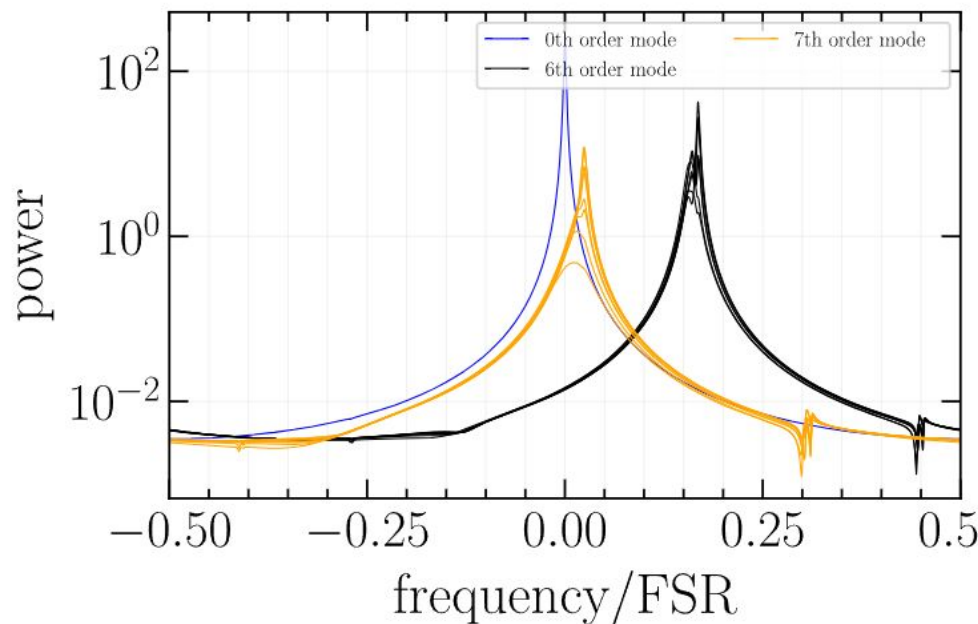
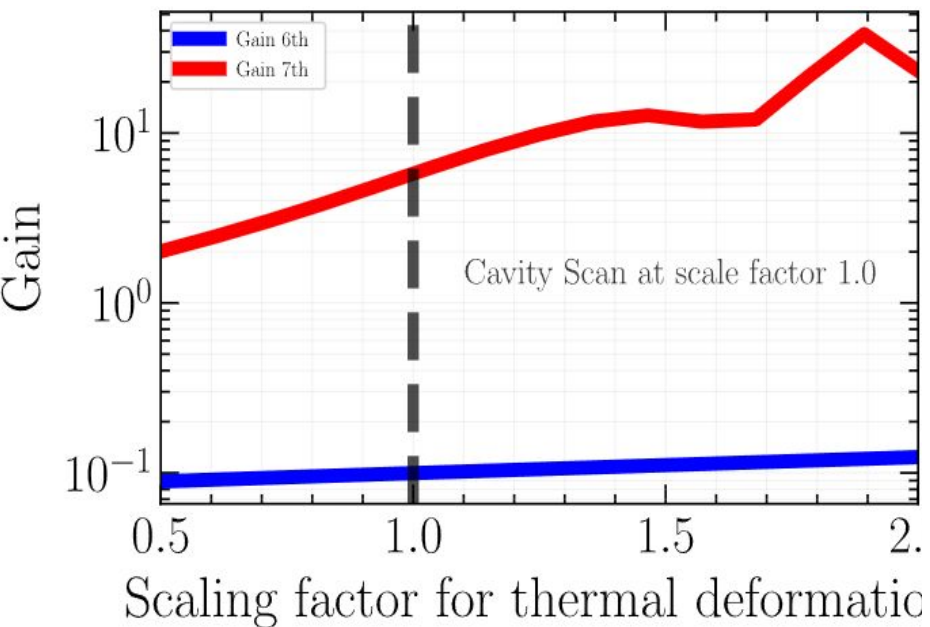
ITM



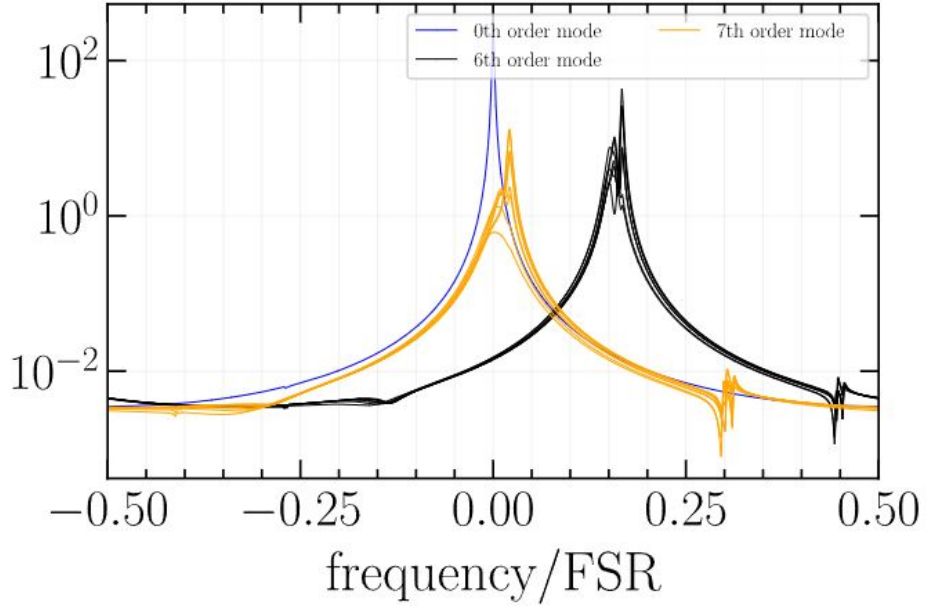
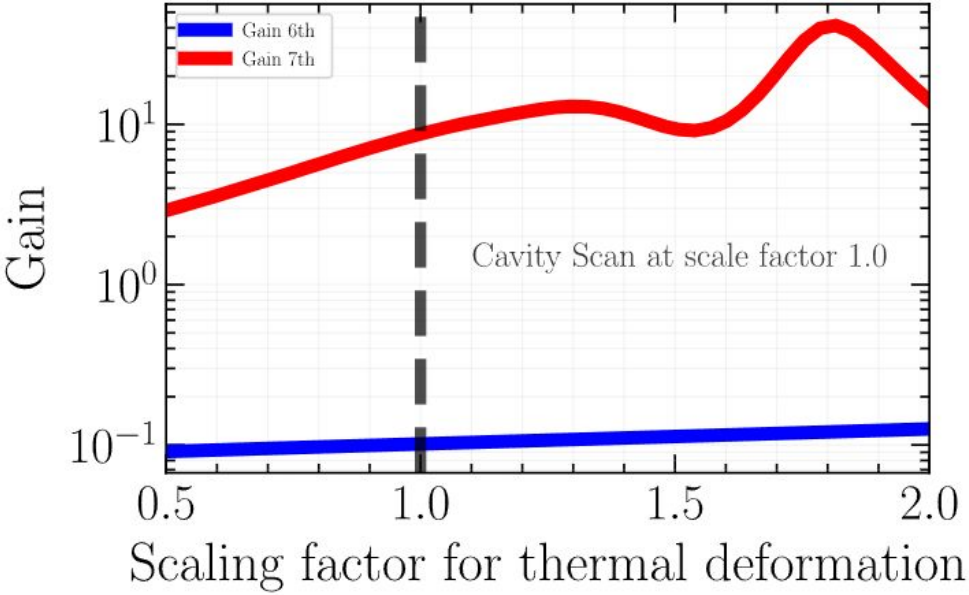
ETM



Cold State Baseline Option: Coated ETM With Uncoated ITM



Cold State Baseline Option: Coated ETM With Coated ITM (No Extrapolate)



Additional Slides

