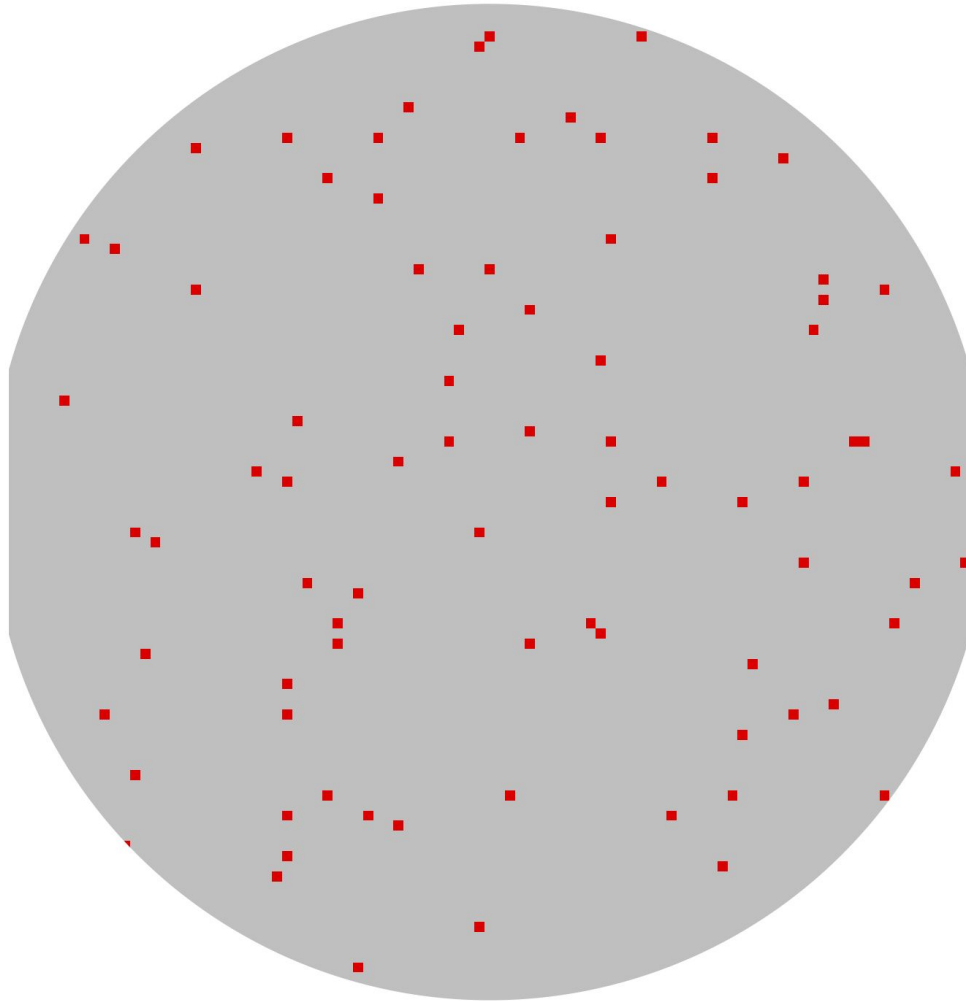


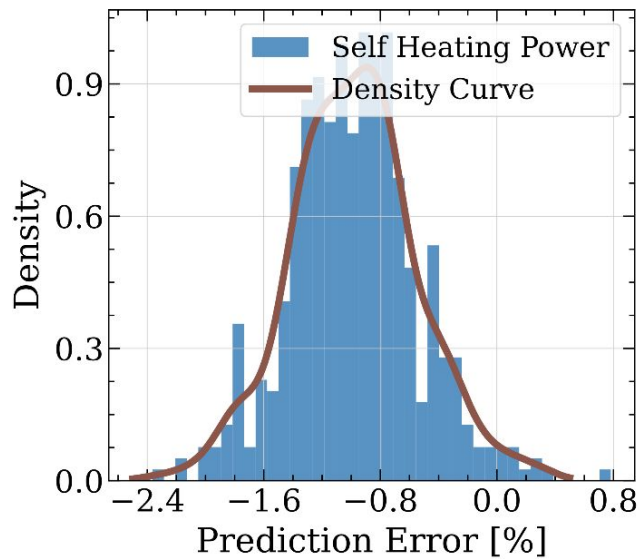
From FLIR thermal imaging of the **front surface** **temperature** to decode the **thermal state of the test mass**, including the RH, FROSTI power and main laser power/location



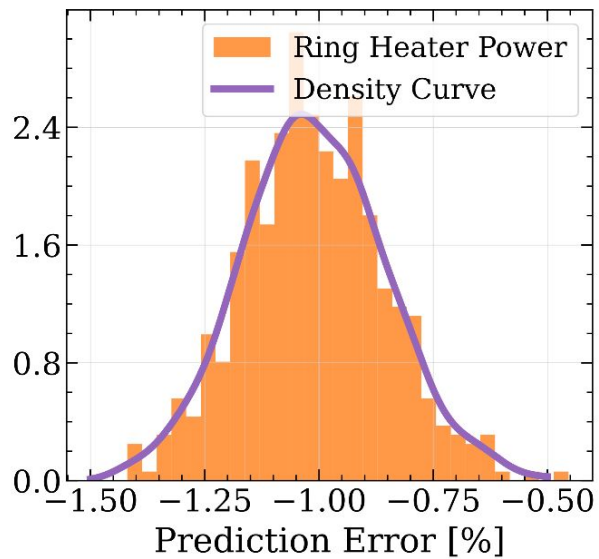
Randomly
sampled “dead”
pixels (1%).

How it performs
with the algorithm
in the presence of
these dead pixels?

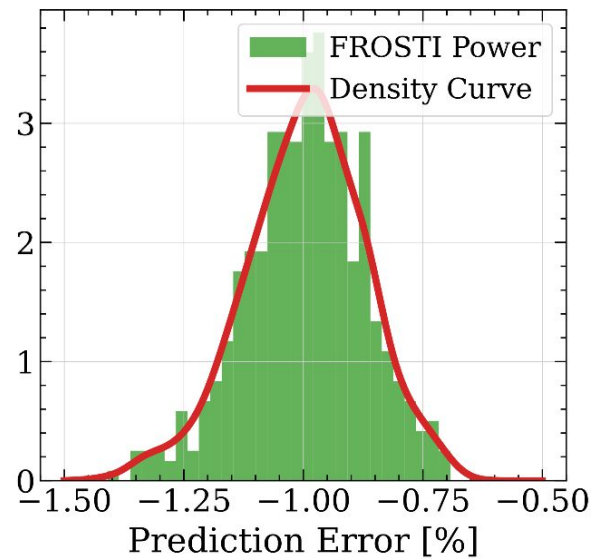
Randomly sampled dead pixels (1%) on the thermal state predictions



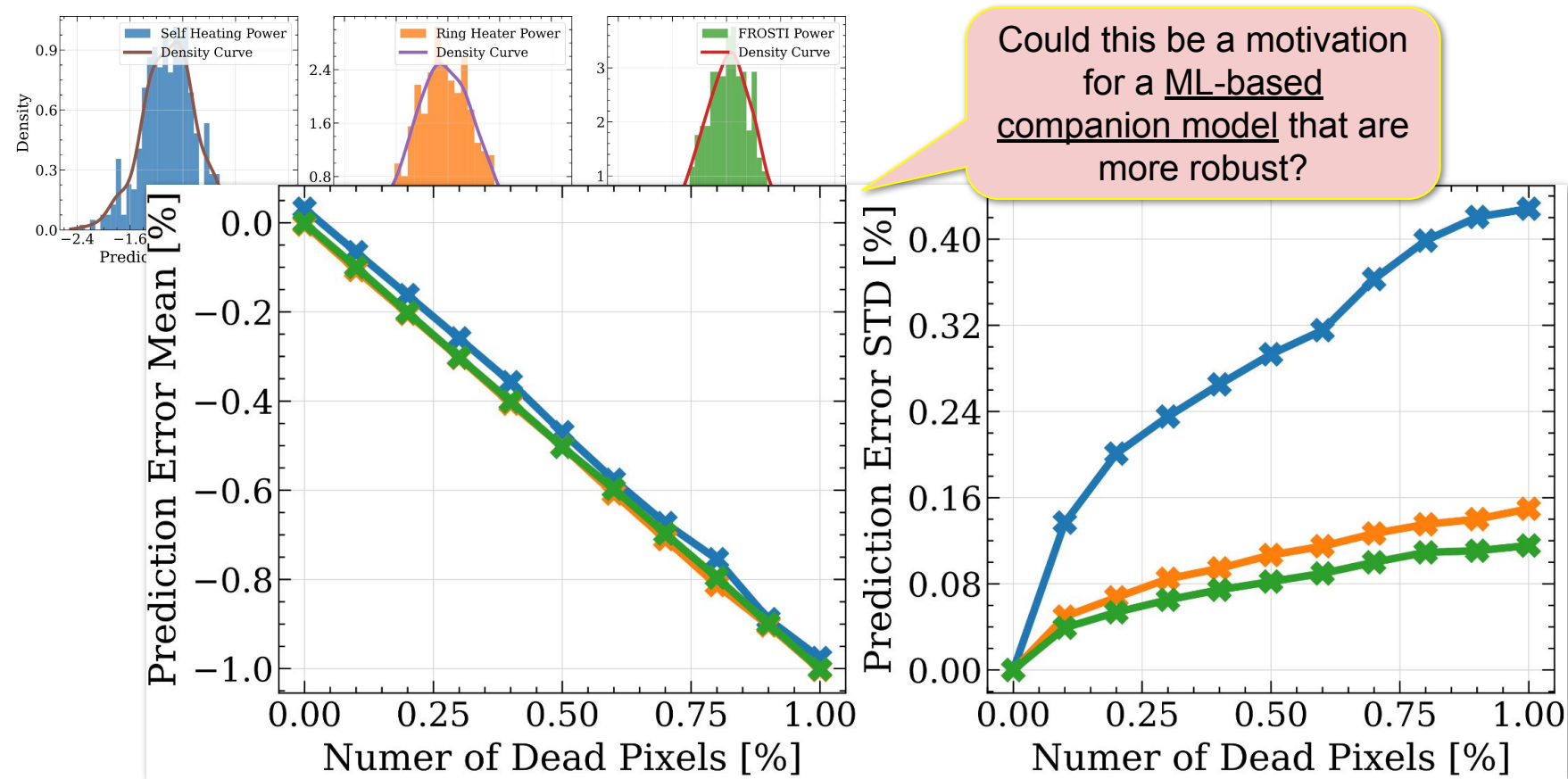
Self Heating Power



Ring Heater Power



FROSTI Power



Average prediction error gets worse “linearly” as the number of dead pixels increases