

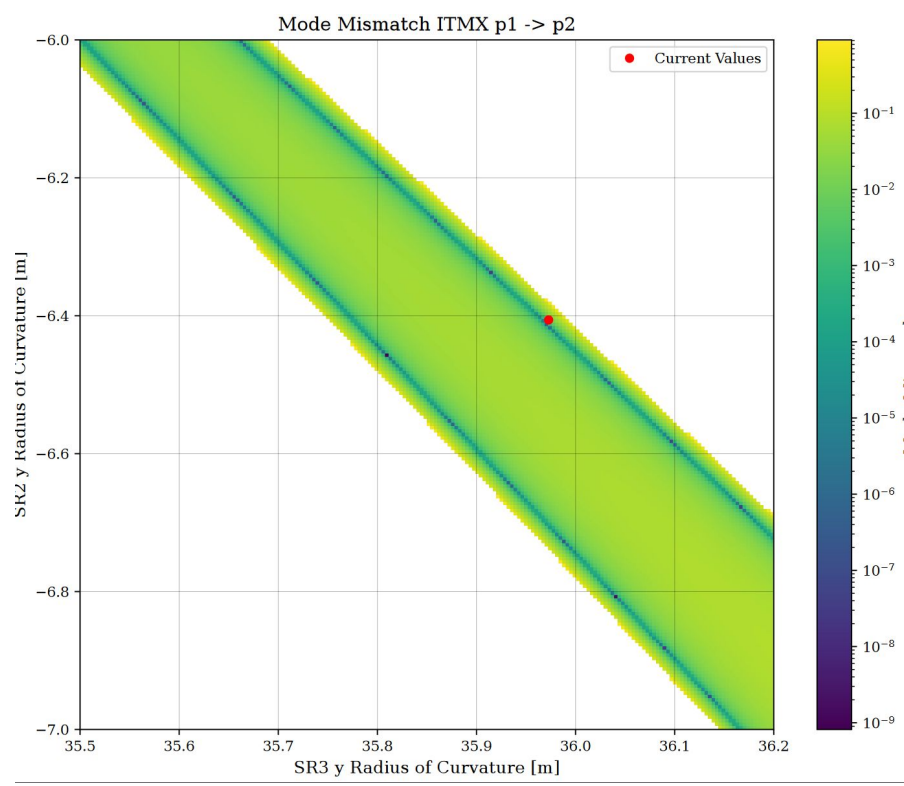
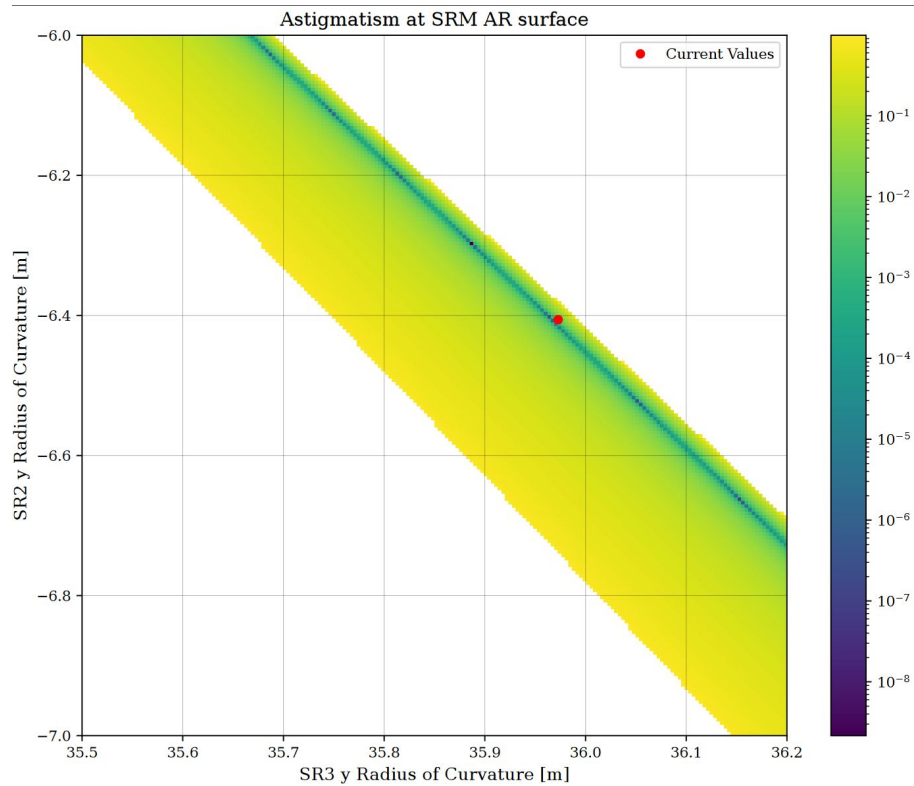
Mismatch Between X Arm and SRX

LIGO with AOIs

Coupling	Mismatch (x)	Mismatch (y)
ITMX.p1.i -> ITMX.p2.o	0.00001	0.00347
ITMX.p2.i -> ITMX.p1.o	0.00001	0.00347

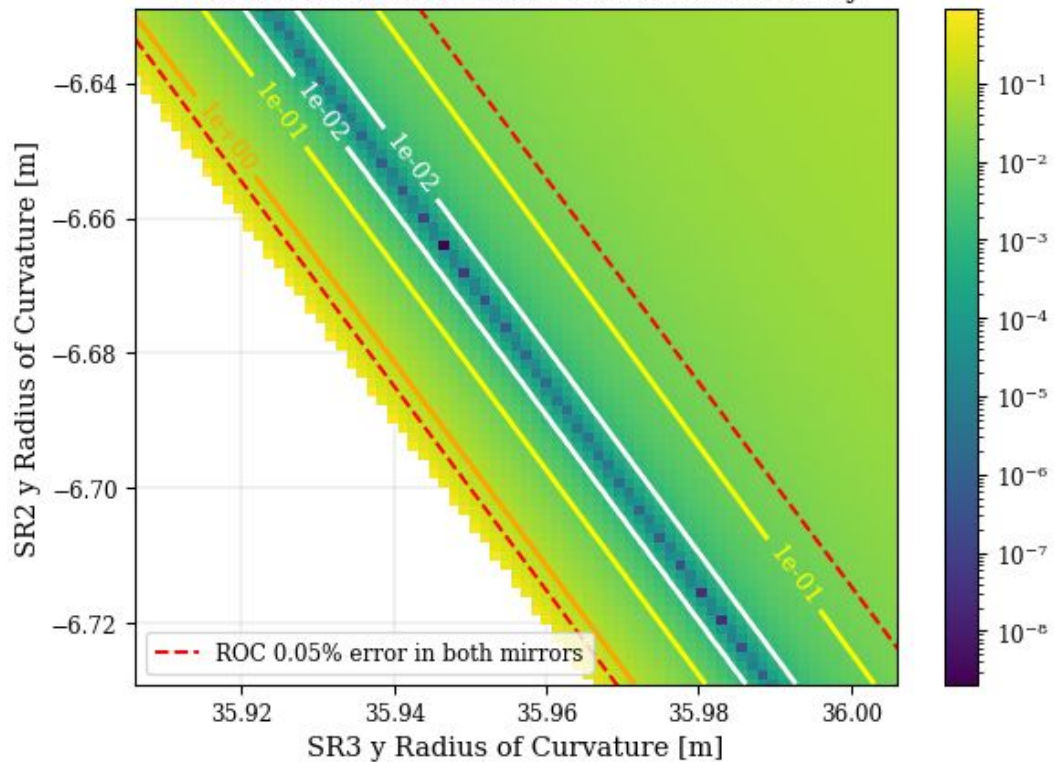
LIGO without AOIs

Coupling	Mismatch (x)	Mismatch (y)
ITMX.p1.i -> ITMX.p2.o	0.00086	0.00086
ITMX.p2.i -> ITMX.p1.o	0.00086	0.00086

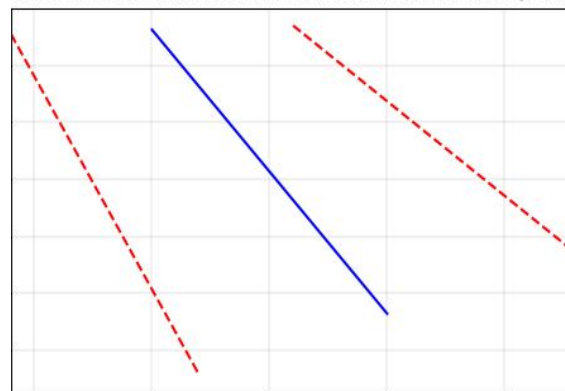


(Arbitrarily chosen error value)

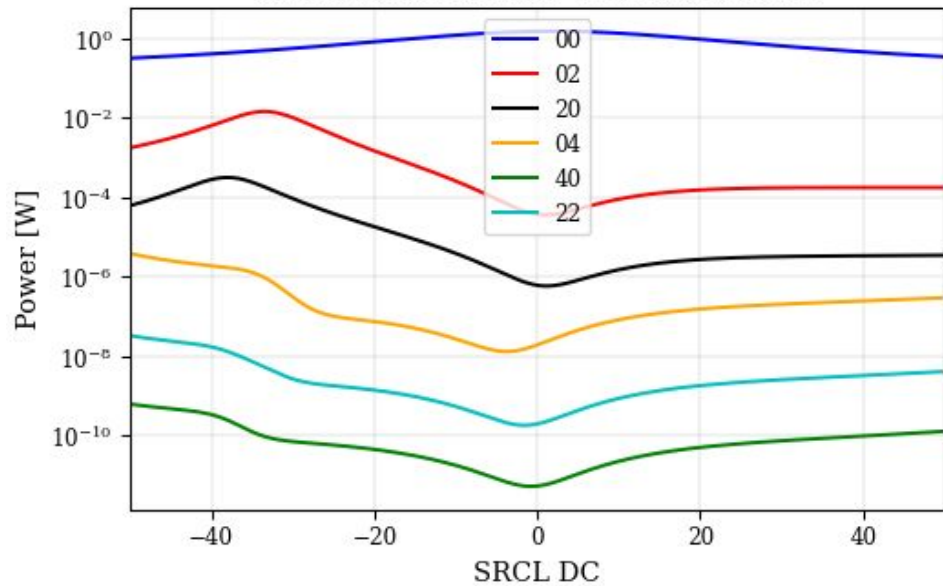
Mode Mismatch Between SRC and Arm Cavity



Exaggerated Error Bound Behavior Relative to Solution Line (axes not to scale)



Power in HG Modes - Default Mirrors



Power in HG Modes - Optimized Mirrors

