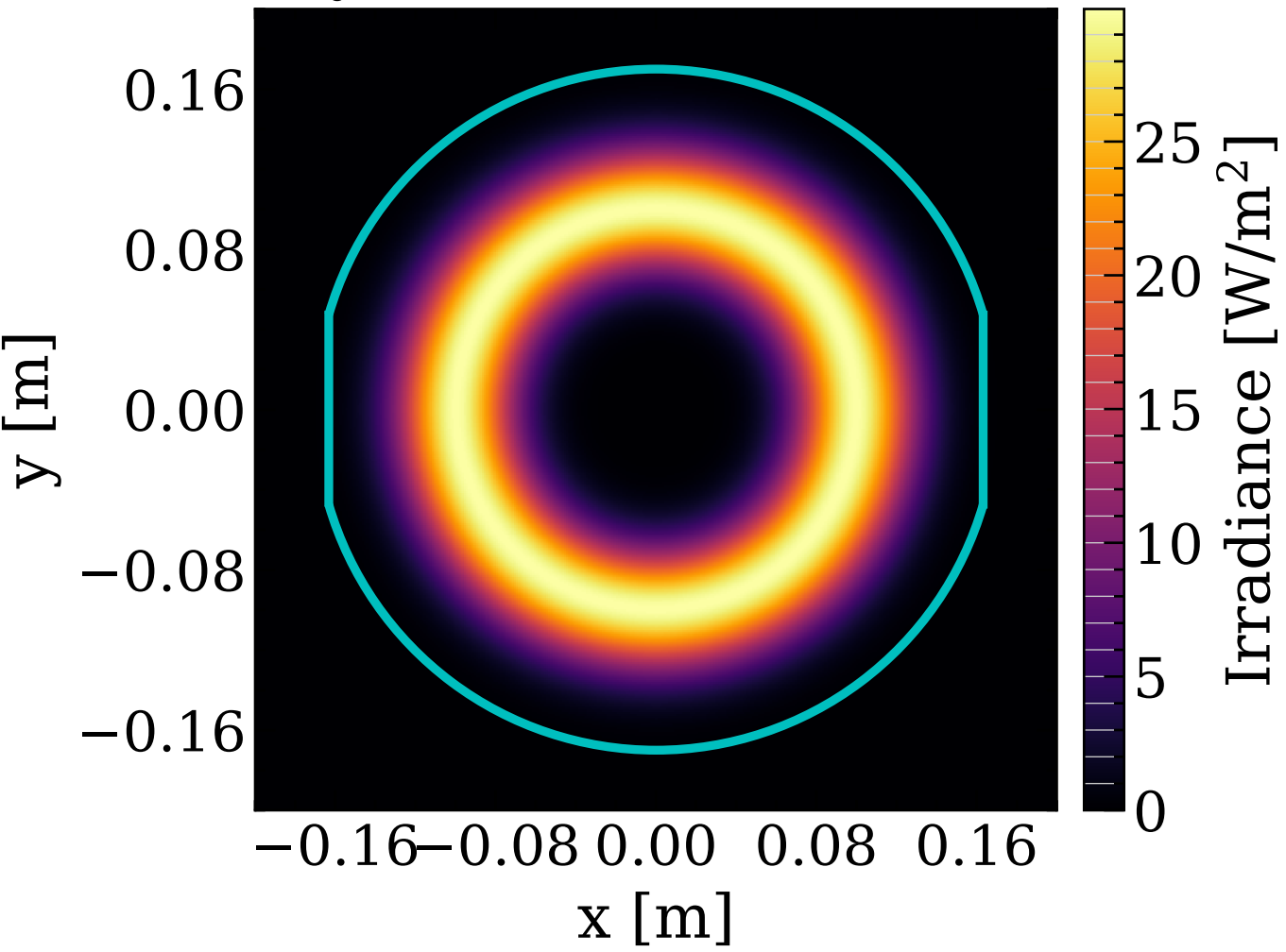
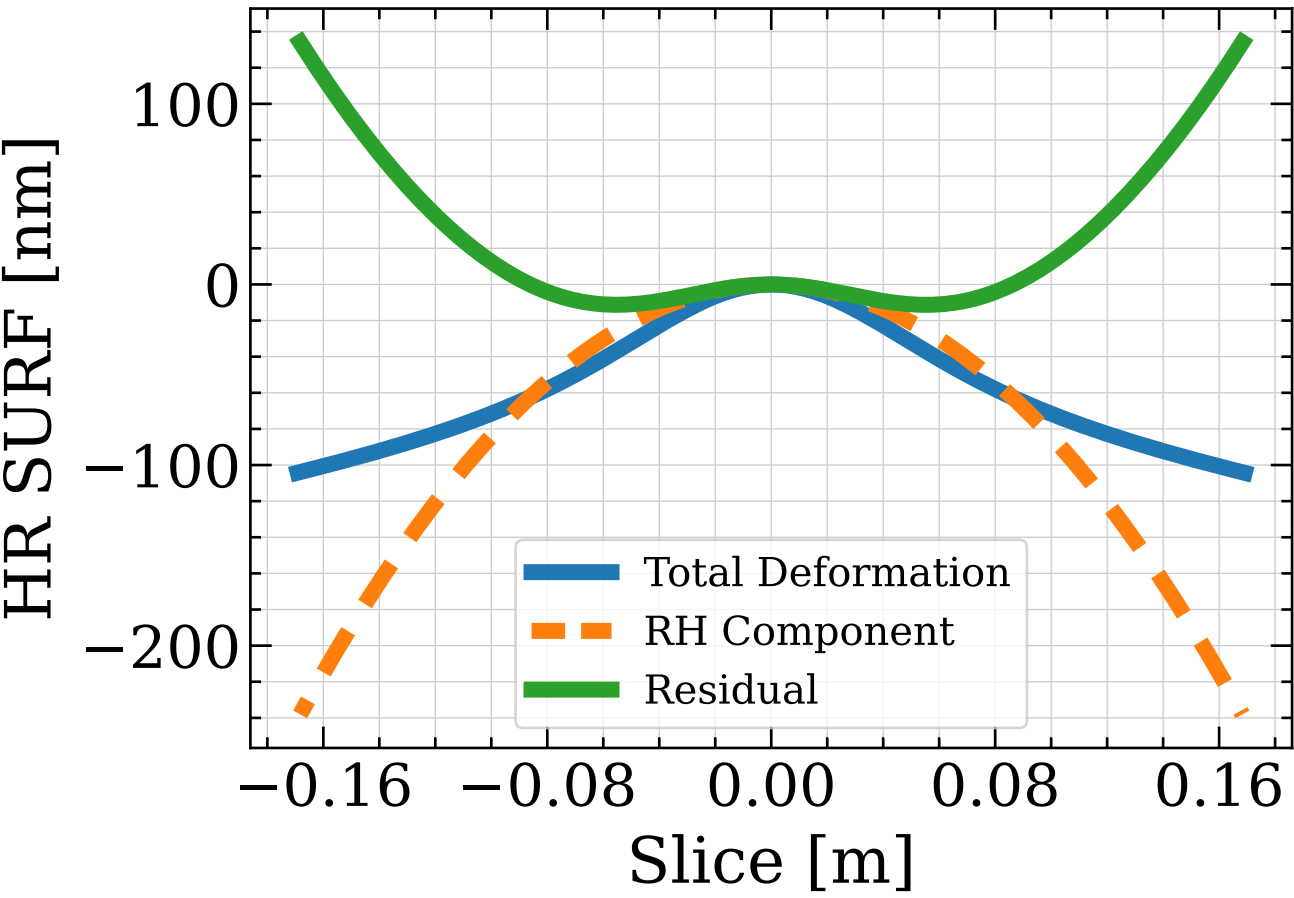


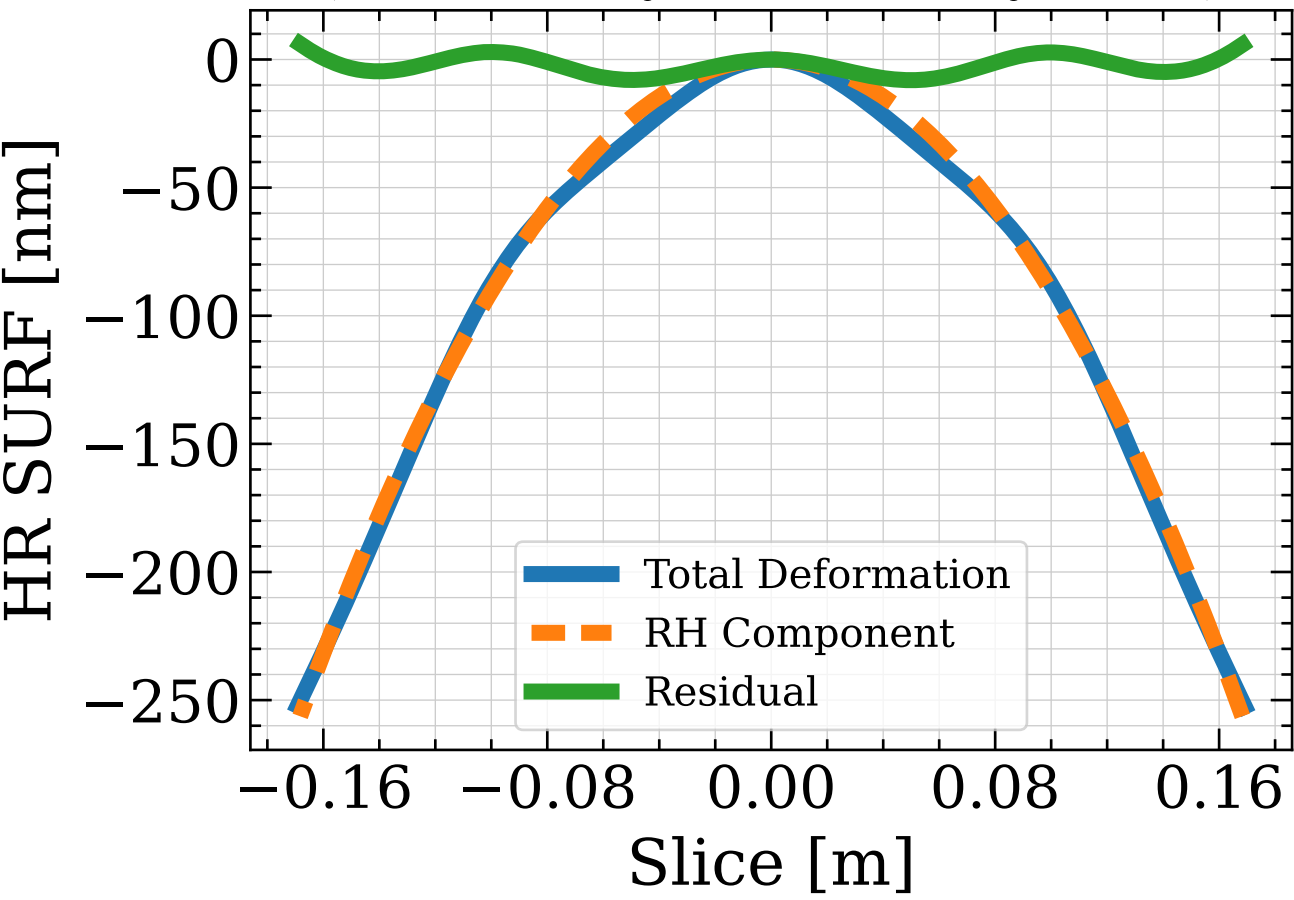
$w_0 = 3 \text{ cm}$, Loss = 0.02 %

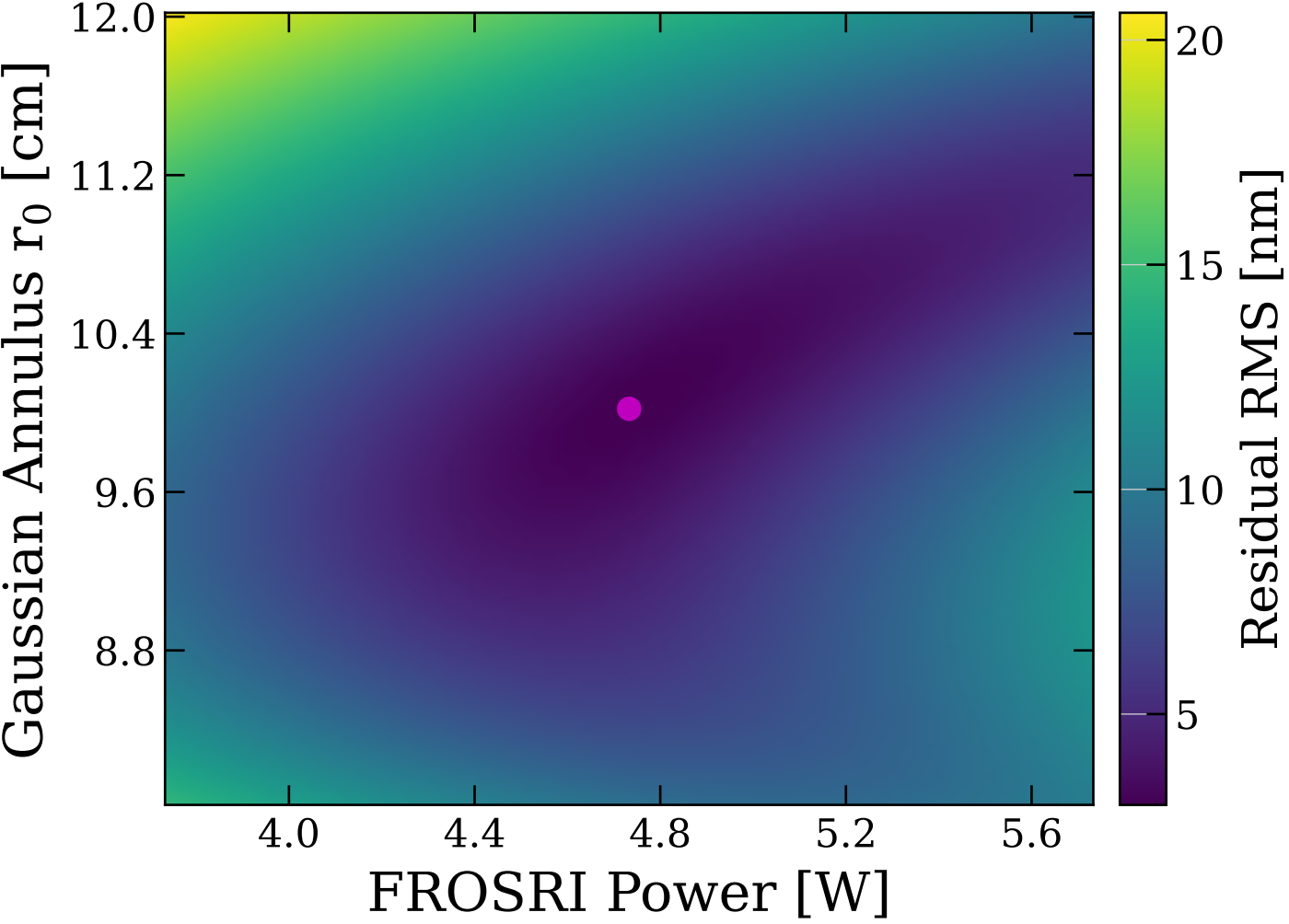


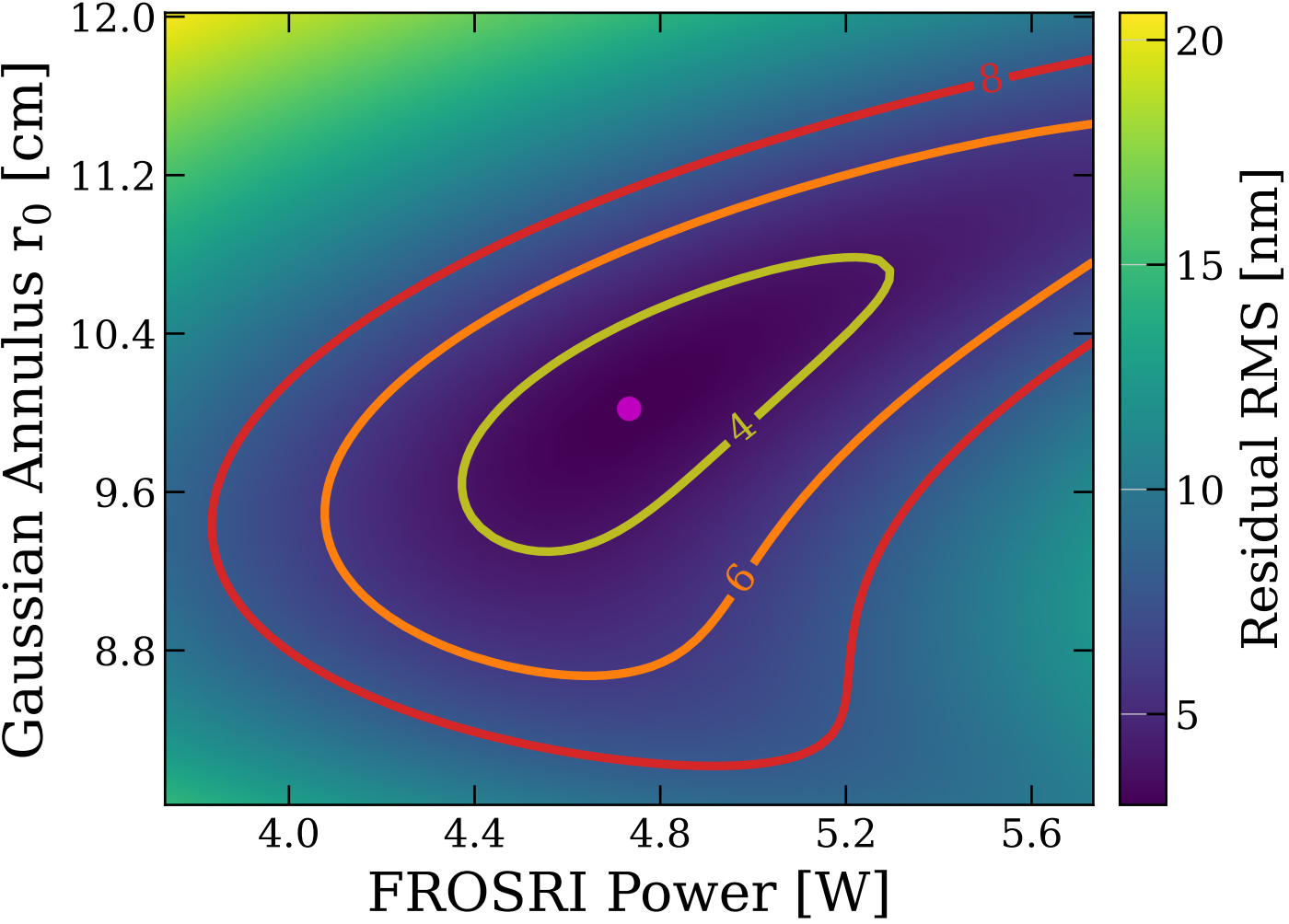
No FROSTI



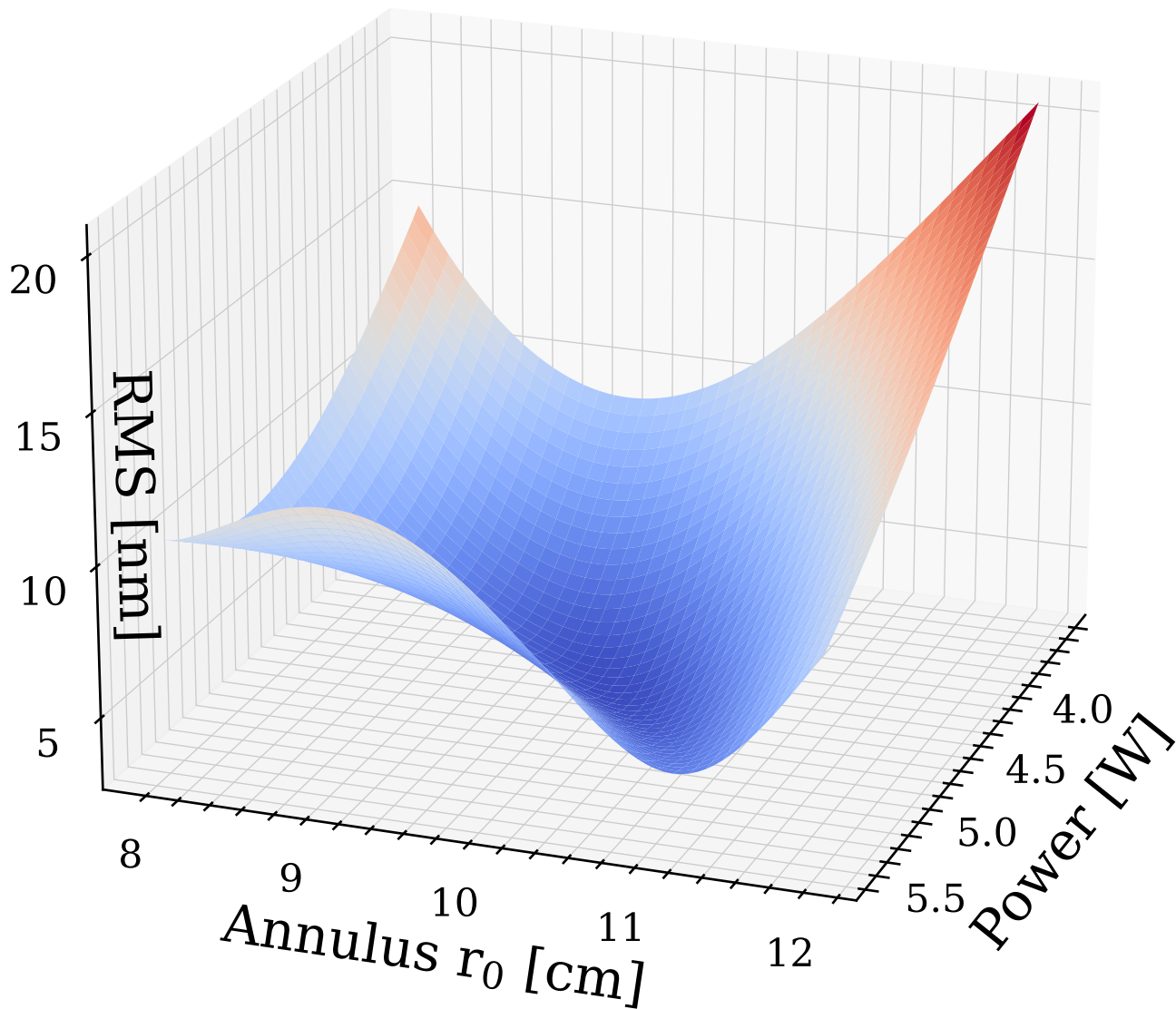
Optimal FROSTI
($P=4.7$ W, $r_0=10.0$ cm, $w_0=3$ cm)

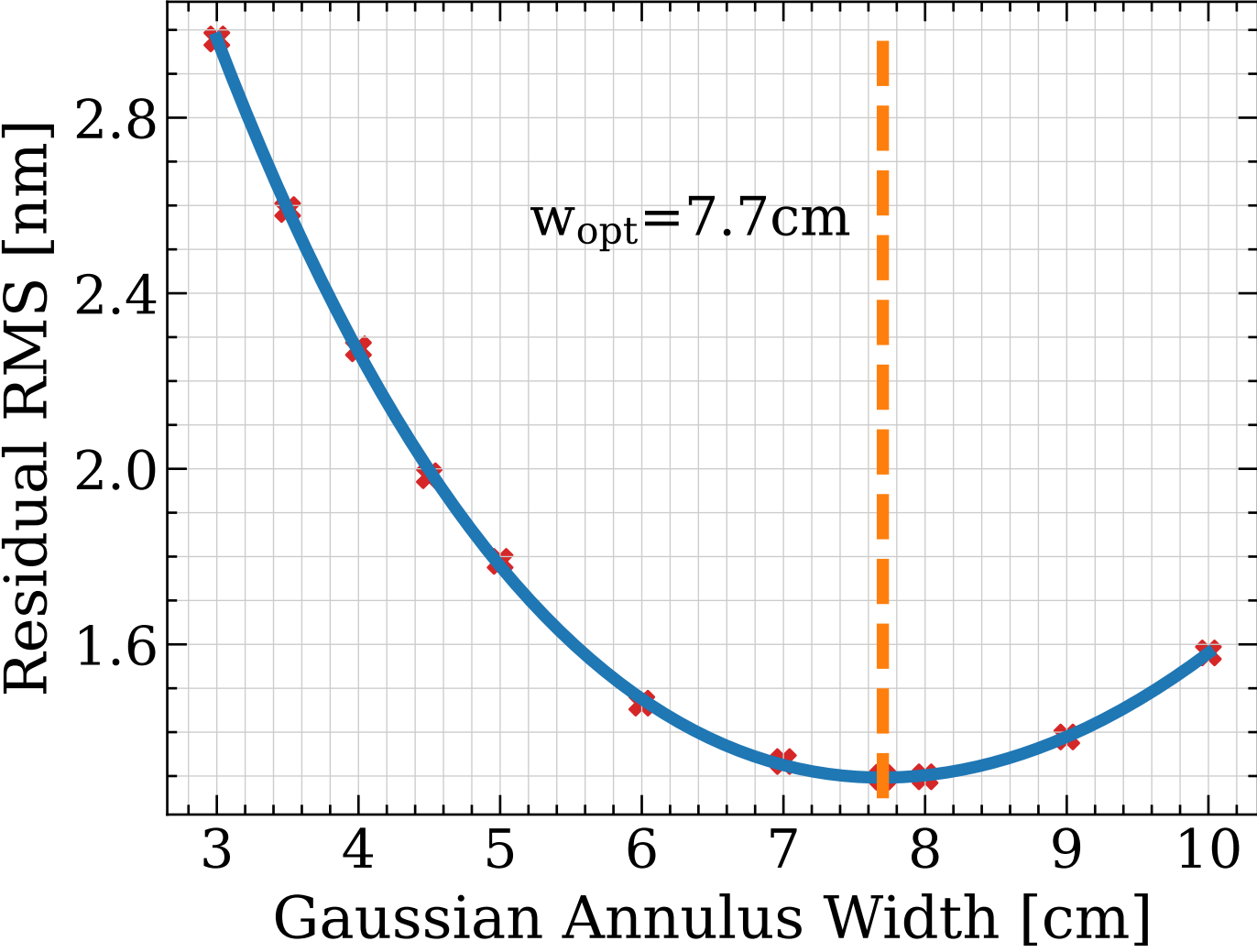




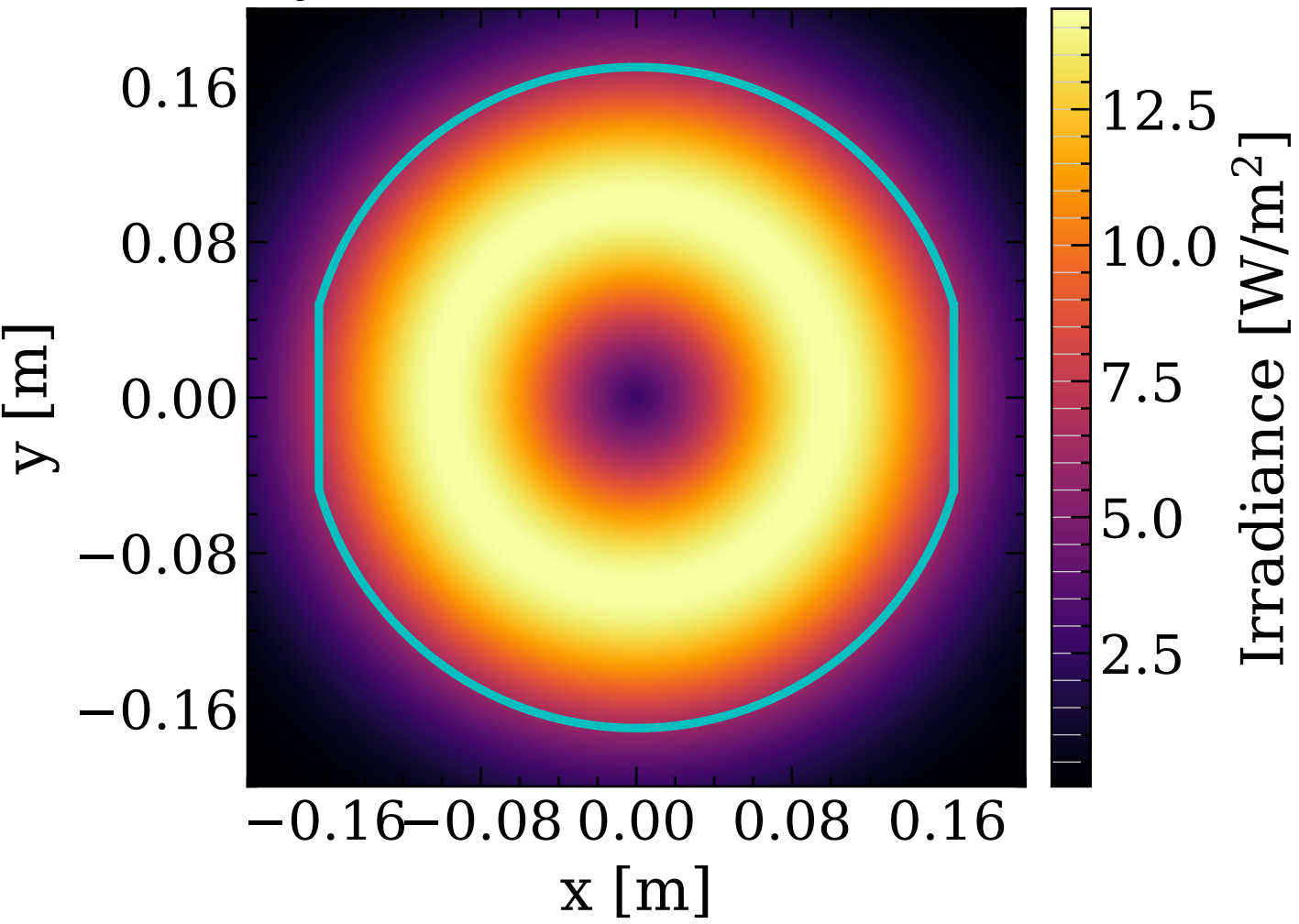


$$w_0 = 3 \text{ cm}$$

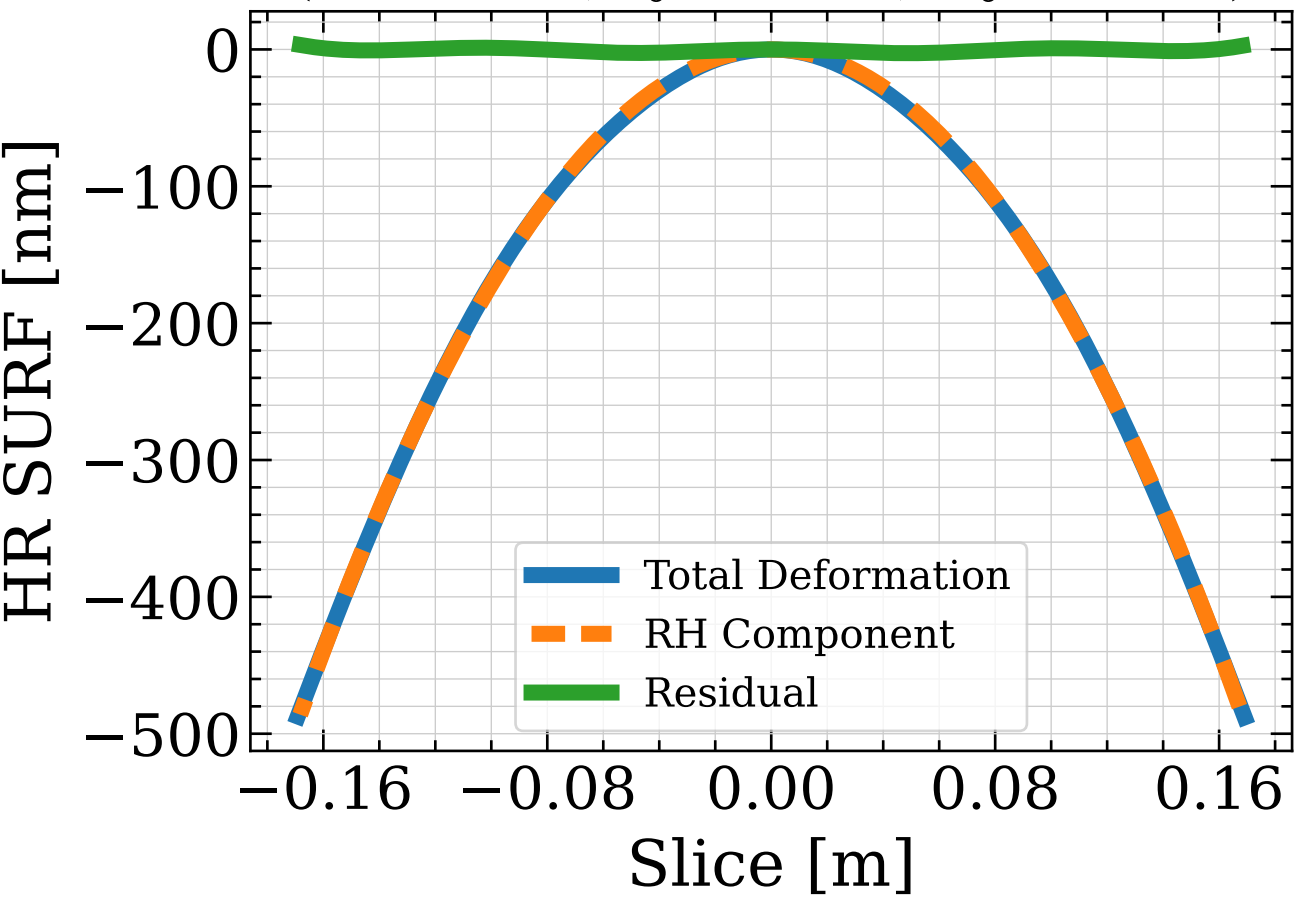


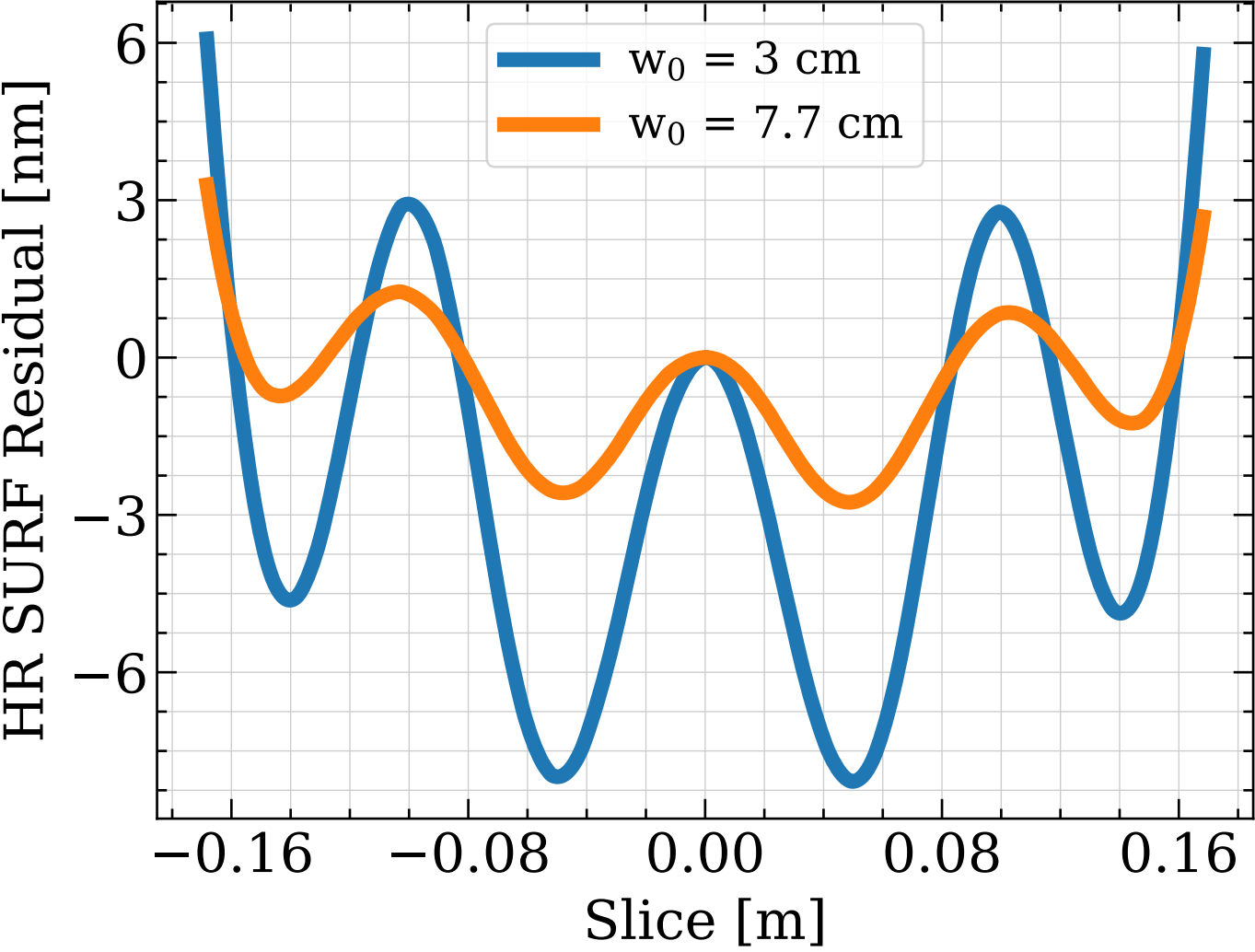


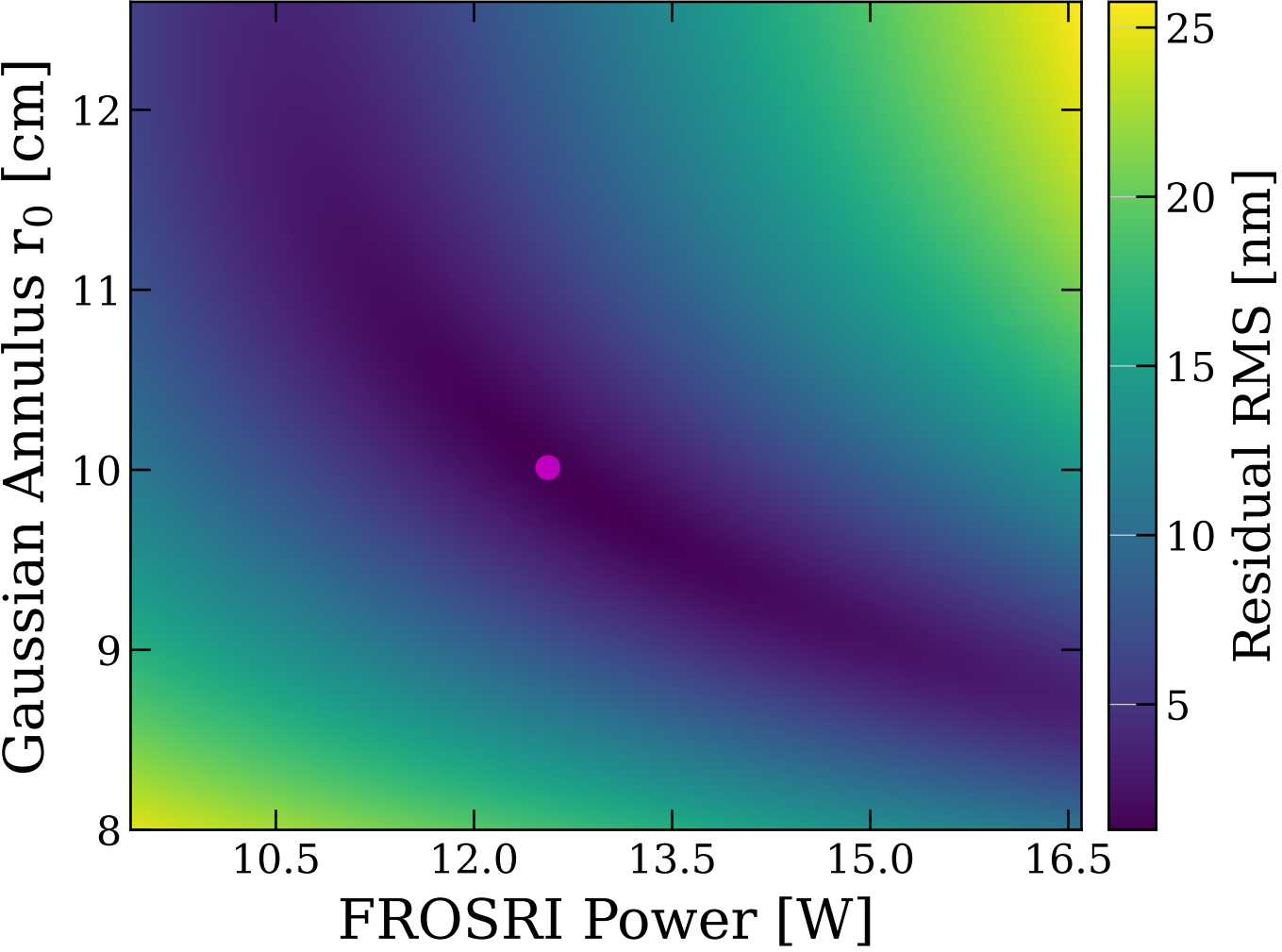
$w_0 = 7.7 \text{ cm}$, Loss = 0.56 %

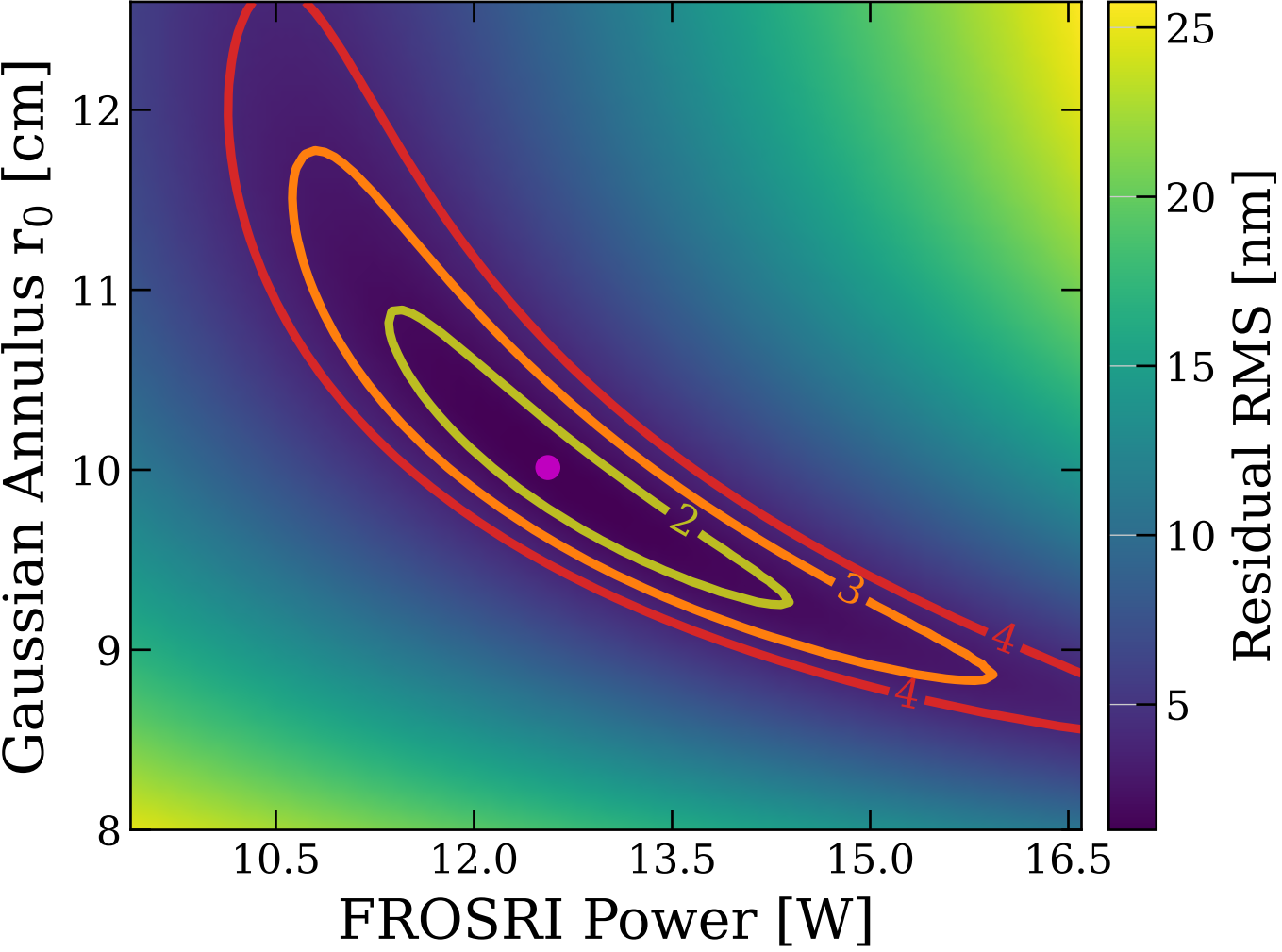


Optimal FROSTI
($P=12.7$ W, $r_0=9.9$ cm, $w_0=7.7$ cm)









$$w_0 = 7.7 \text{ cm}$$

