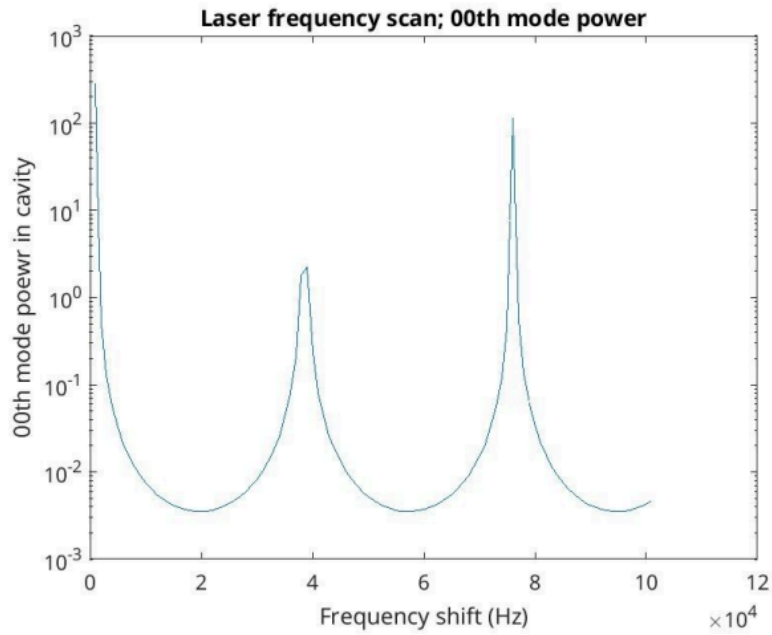
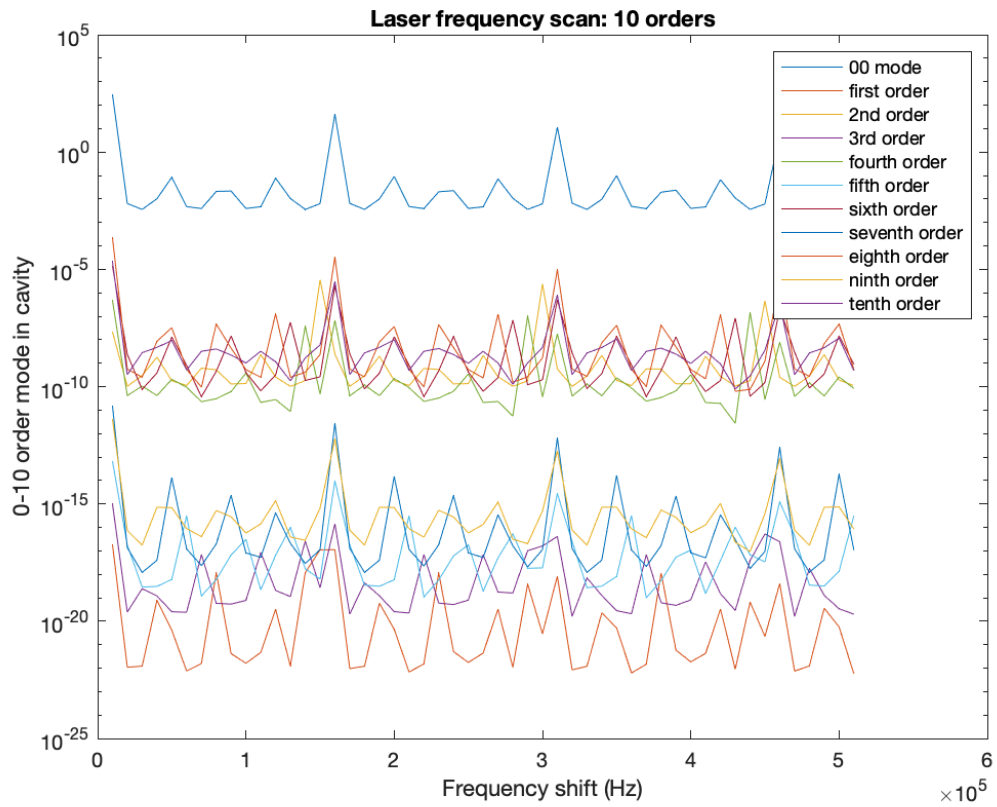


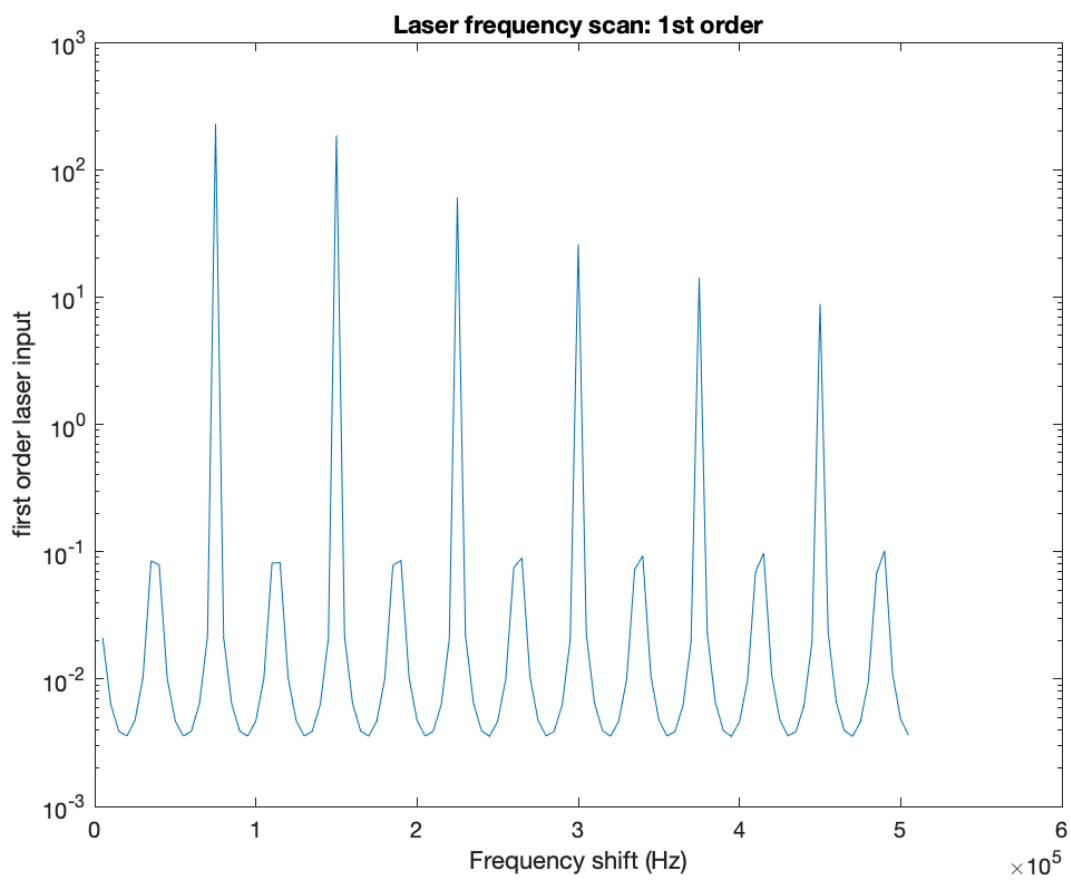
Assuming Ideal Cavity
Cavity scan: pure 00 order laser input:



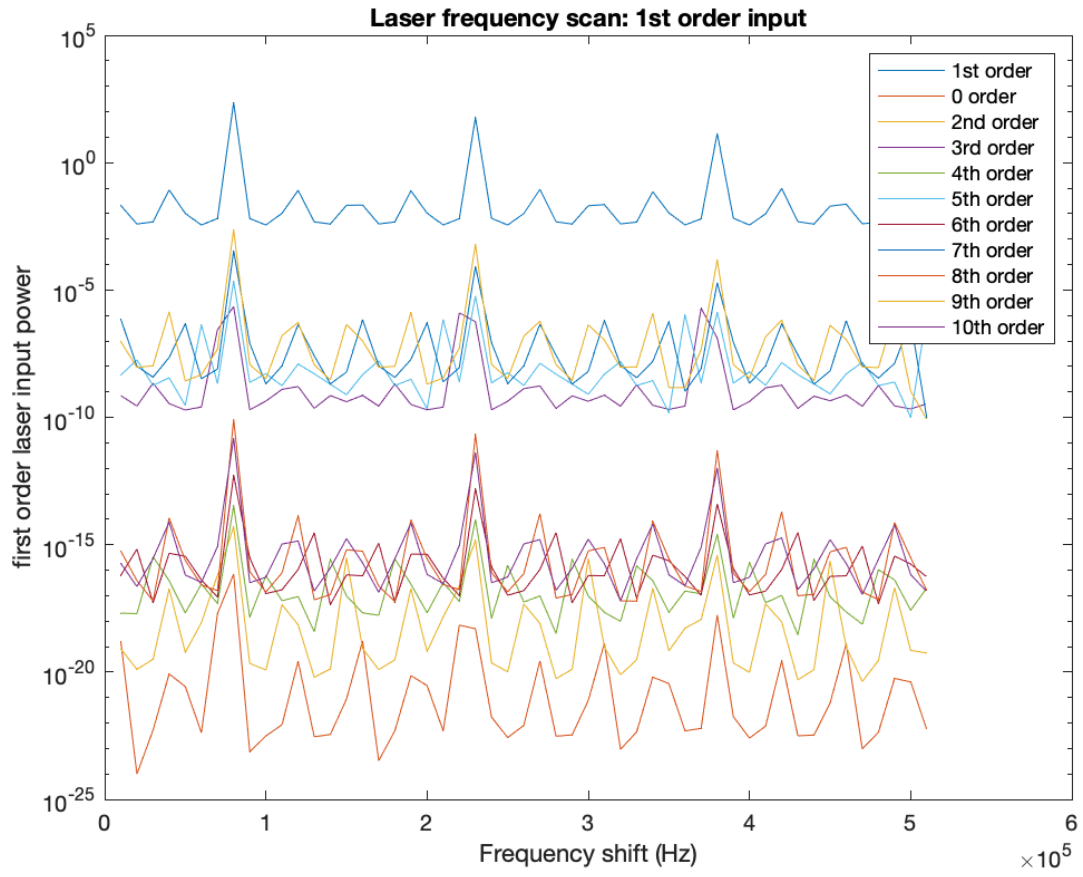
(I used Pooyan's code for 00 mode cavity scan, I added a new graph of 1-10th order scan with pure 00 mode laser input)



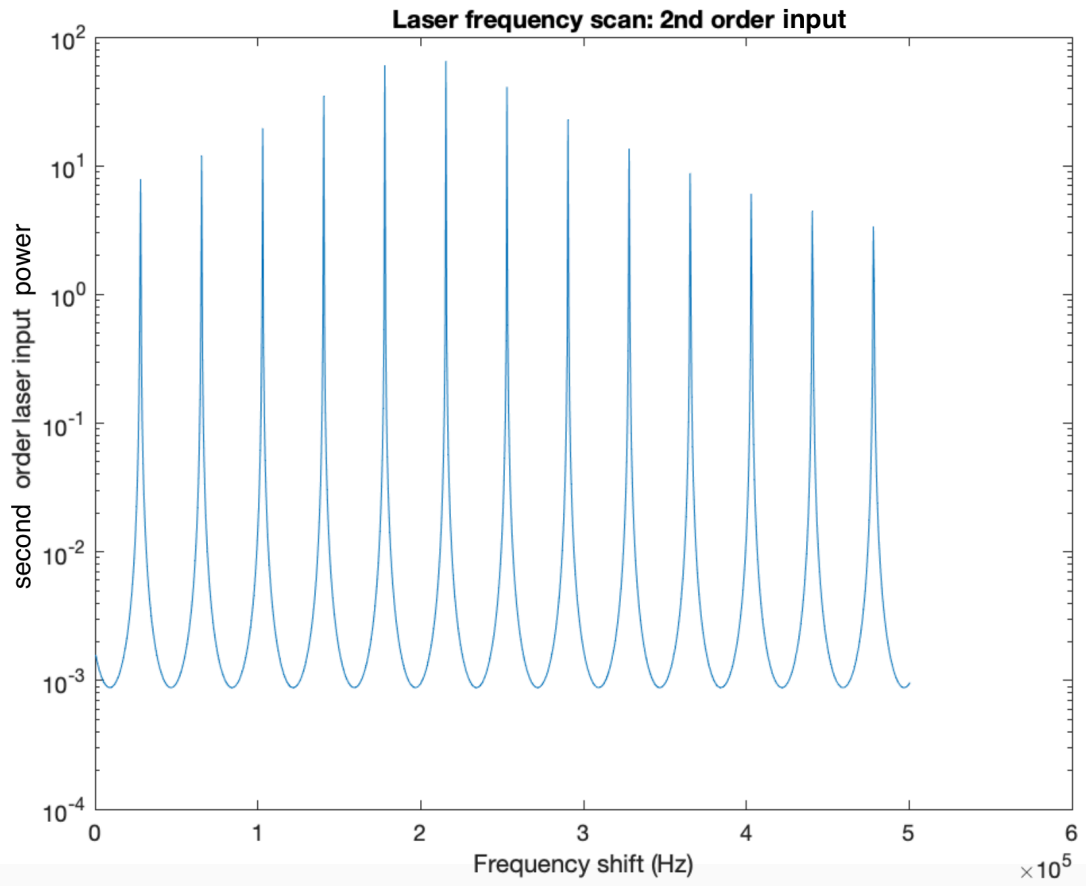
Cavity scan: 1st order laser input:



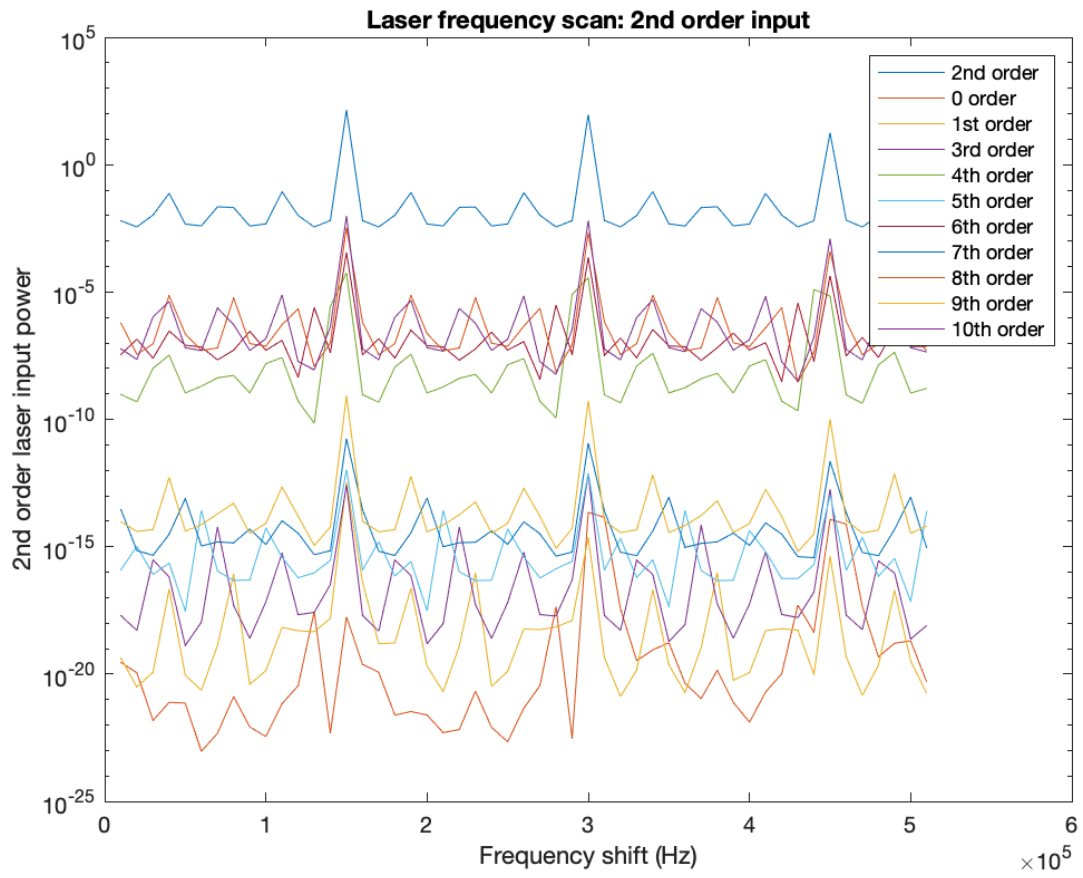
Scanning for 1-10th order with 1st order input laser



Cavity scan: 2nd order laser input:



Scanning for 1-10th order:



Next step

- Confirm the accuracy of the graphs produced (1st order and 2nd order laser), and correct my codes if necessary.
- Distribute and assign tasks for couple cavity project.
- Work on coupled cavity