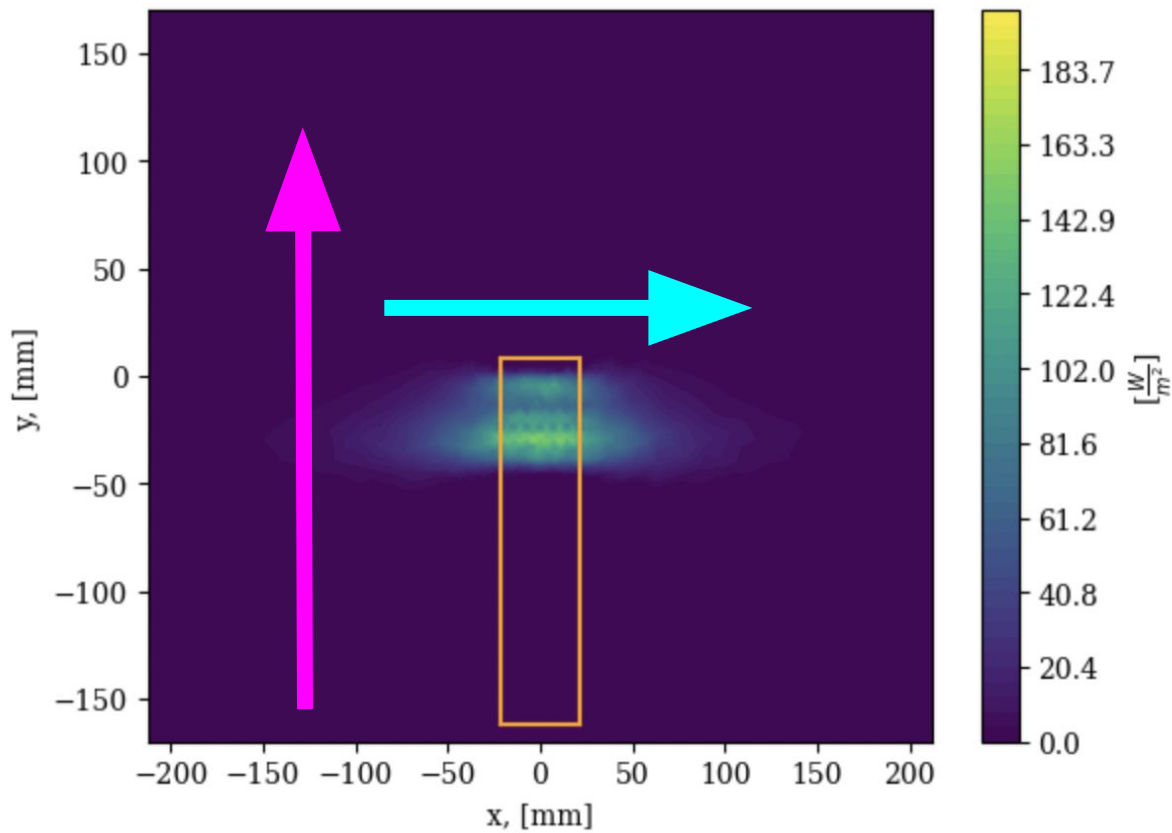


# Simulation Progress

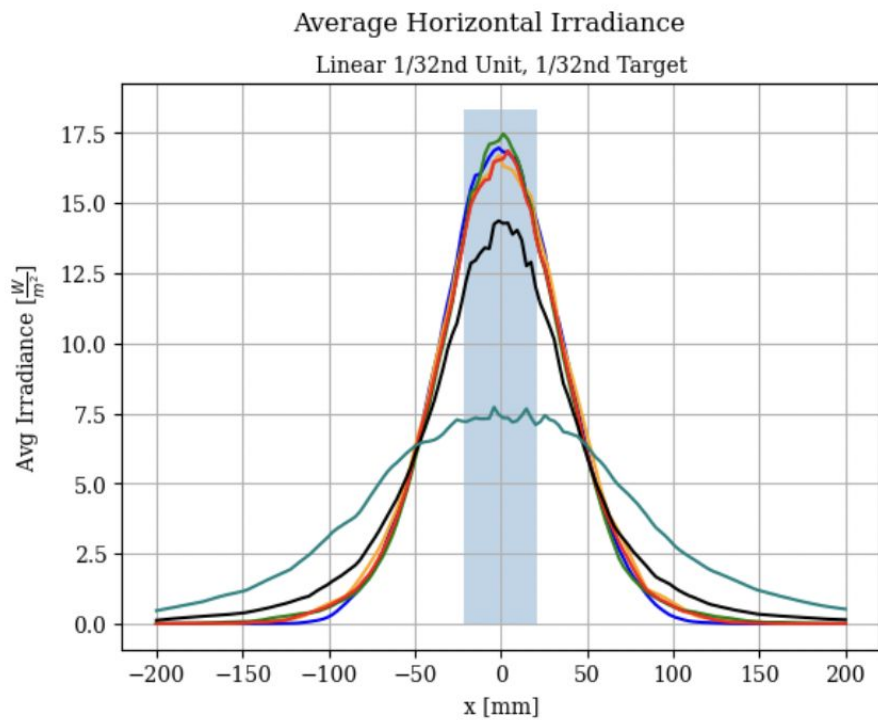
8/15/23

Surface Irradiance [ $\frac{W}{m^2}$ ], Flat Bounds

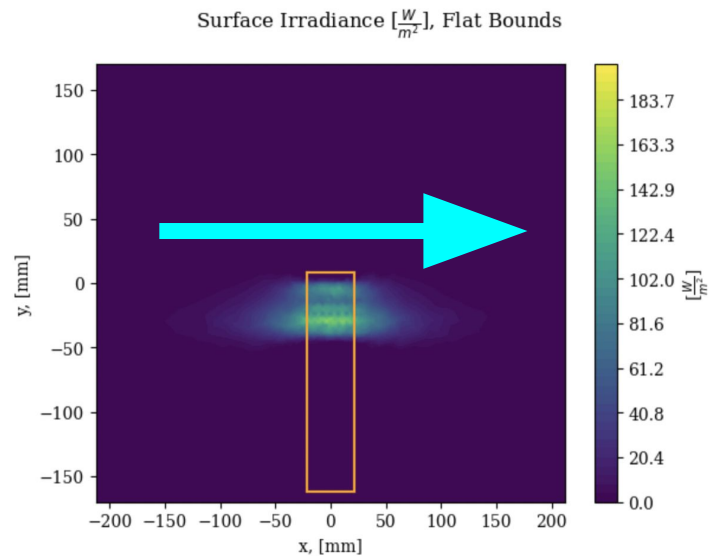


Averaged along  
horizontal axis

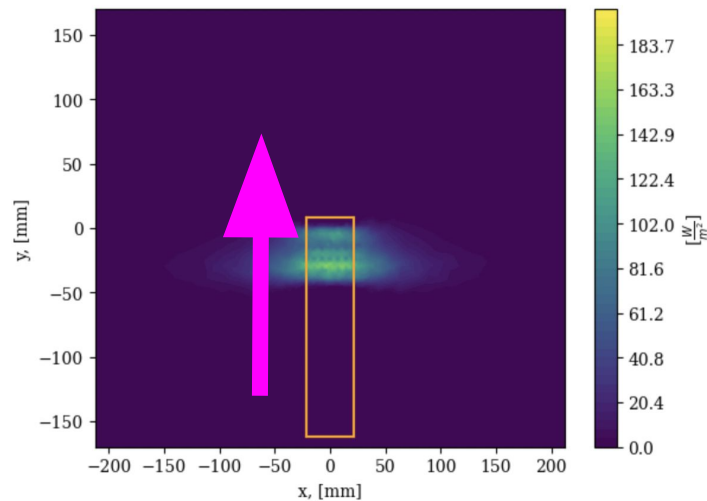
Averaged along vertical  
axis



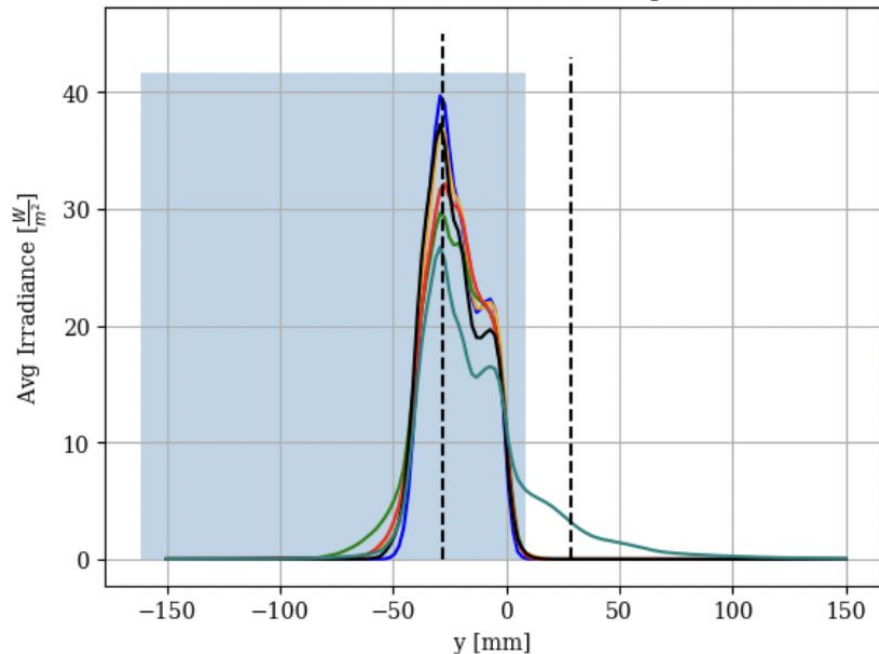
- Parabola Rot, p1=90.607, p2=12.58
- Parabola, p1=43.326, p2=5.5259, rotated parabola plane axis=45 degrees
- Parabola, p1=44.5259, p2=8.69, phi\_parabola=0.313588
- Parabolic: p1=43.326, p2=5.5828
- Flat Bounds
- No Bounds
- Target, X Dimension



Surface Irradiance [ $\frac{W}{m^2}$ ], Flat Bounds



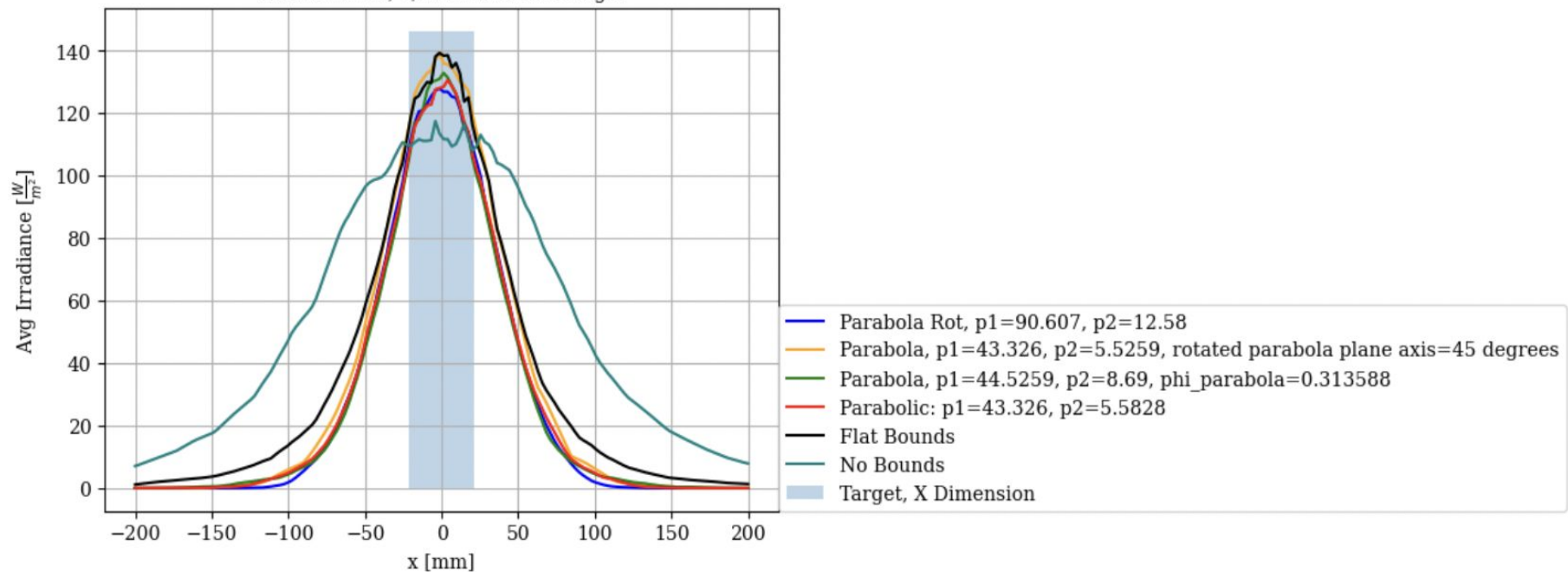
Average Vertical Irradiance  
Linear 1/32nd Unit, 1/32nd Target



- Parabola Rot,  $p1=90.607$ ,  $p2=12.58$
- Parabola,  $p1=43.326$ ,  $p2=5.5259$ , rotated parabola plane axis=45 degrees
- Parabola,  $p1=44.5259$ ,  $p2=8.69$ ,  $\phi_{\text{parabola}}=0.313588$
- Parabolic:  $p1=43.326$ ,  $p2=5.5828$
- Flat Bounds
- No Bounds
- - - Reflector Y Bounds
- Target, Y Dimension

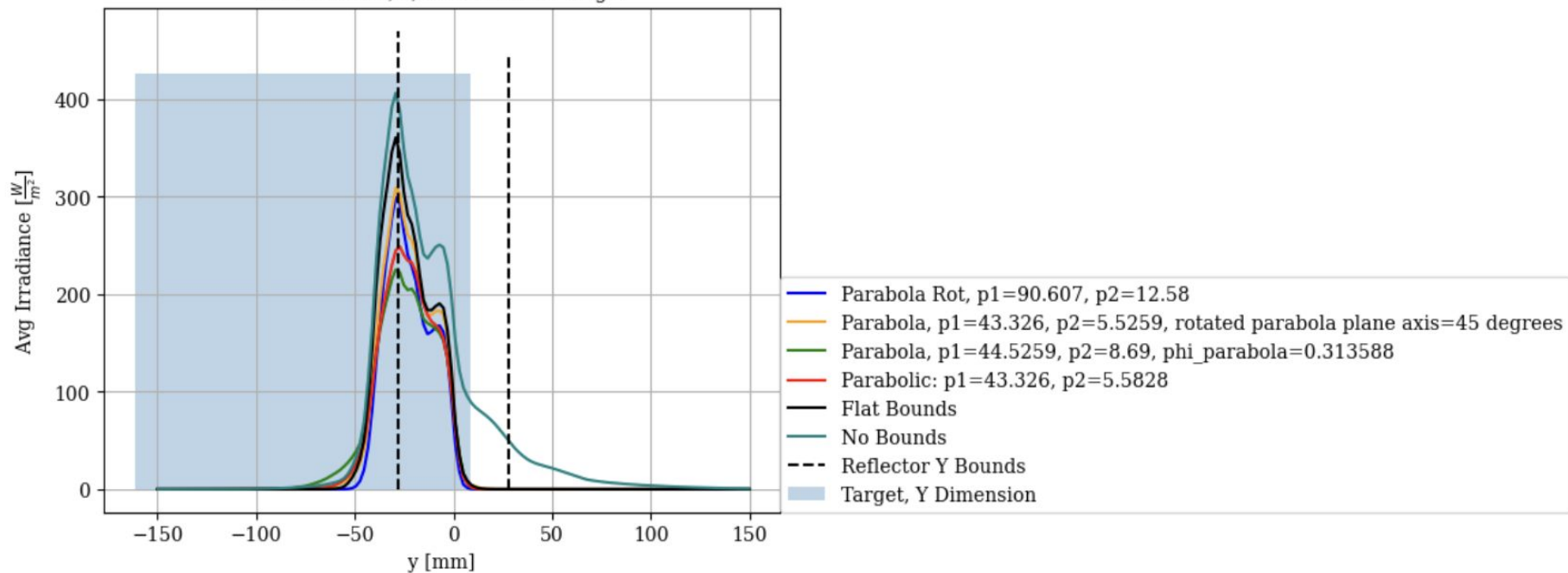
# Normalized [by Deposited Power] Average Horizontal Irradiance

Linear Model, 1/32nd Unit and Target



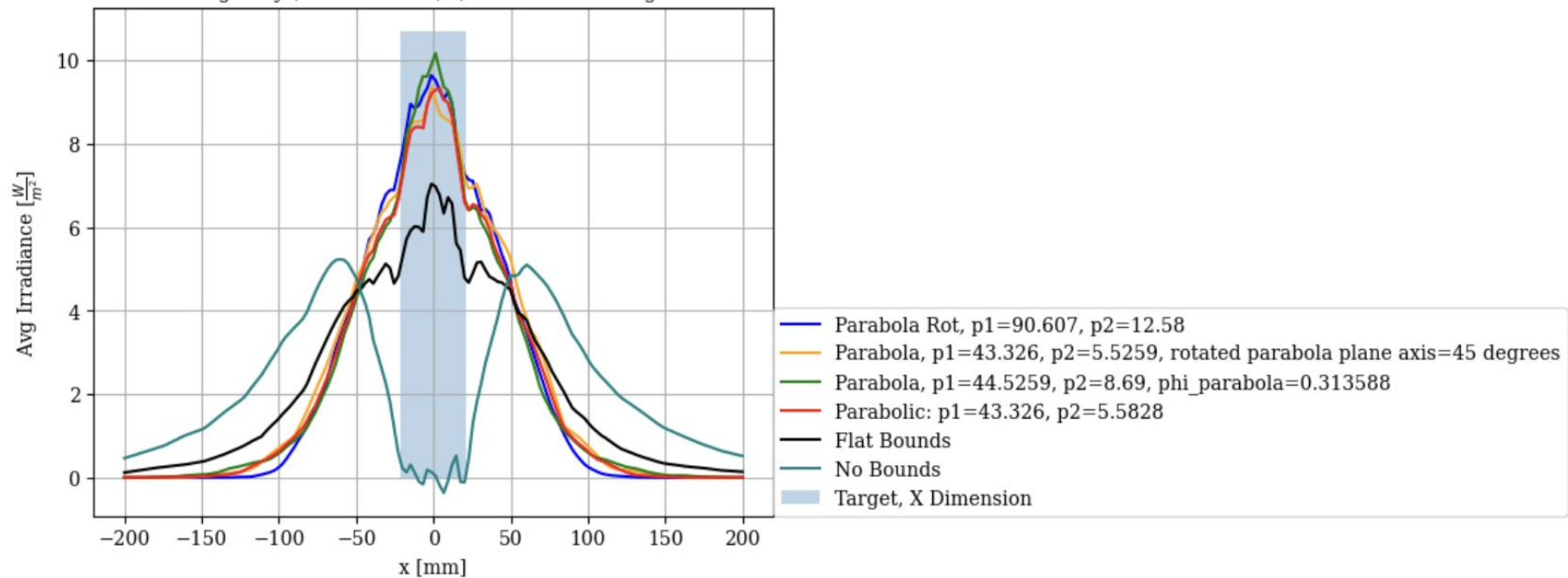
# Normalized [by Deposited Power] Average Vertical Irradiance

Linear Model, 1/32nd Unit and Target



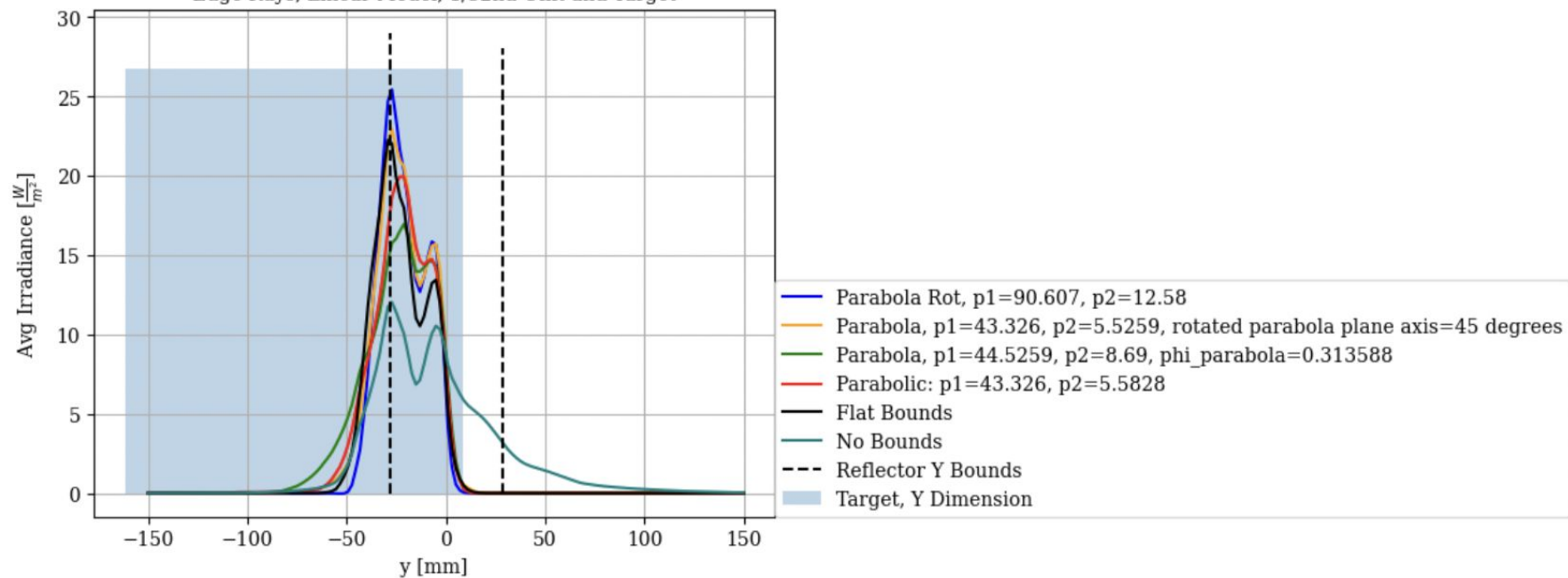
## Average Horizontal Irradiance

Edge Rays, Linear Model, 1/32nd Unit and Target



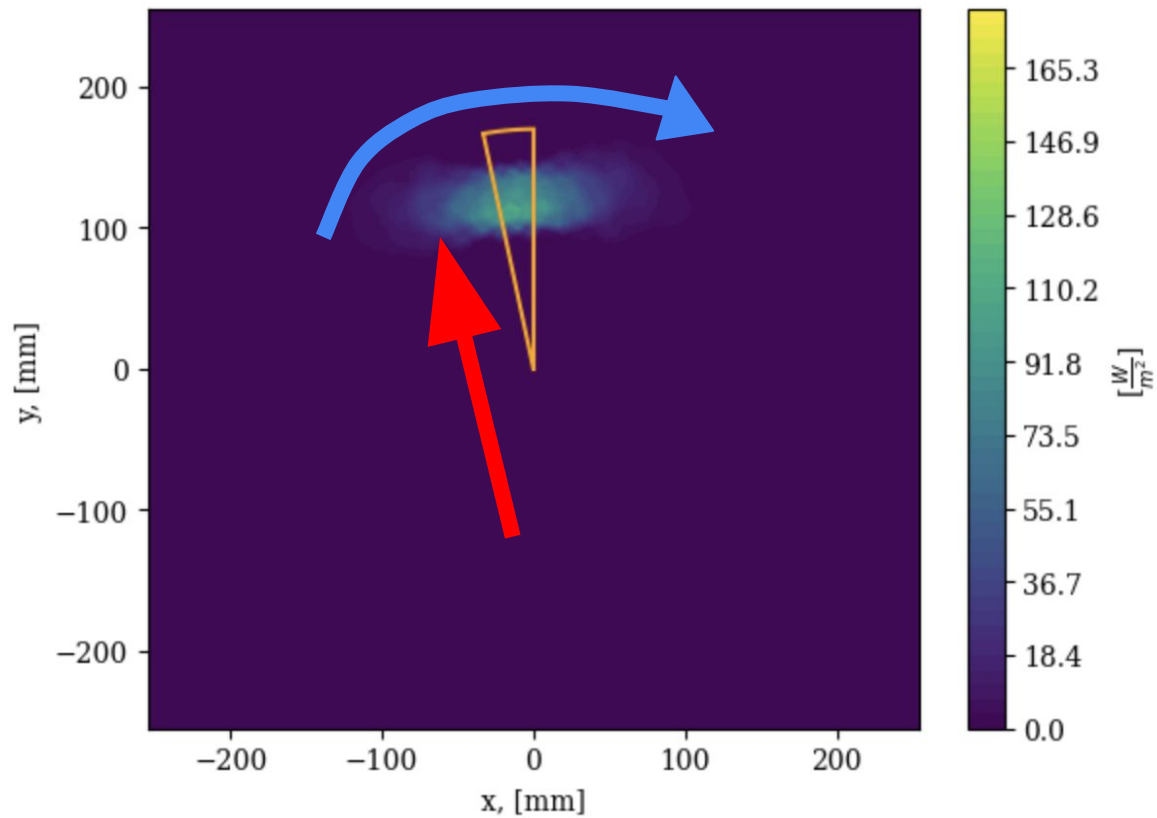
## Average Vertical Irradiance

Edge Rays, Linear Model, 1/32nd Unit and Target





Surface Irradiance [ $\frac{W}{m^2}$ ], Flat Edge Model

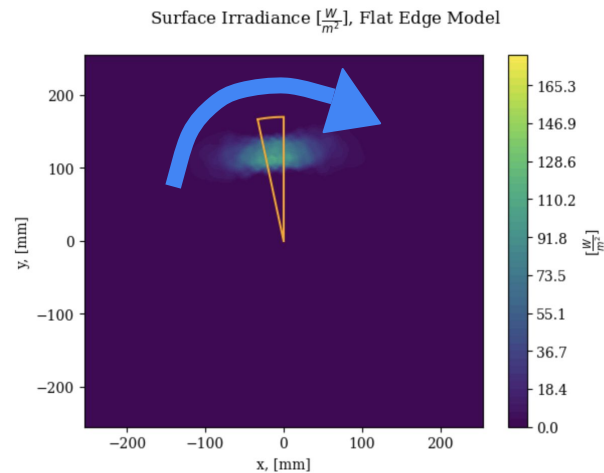
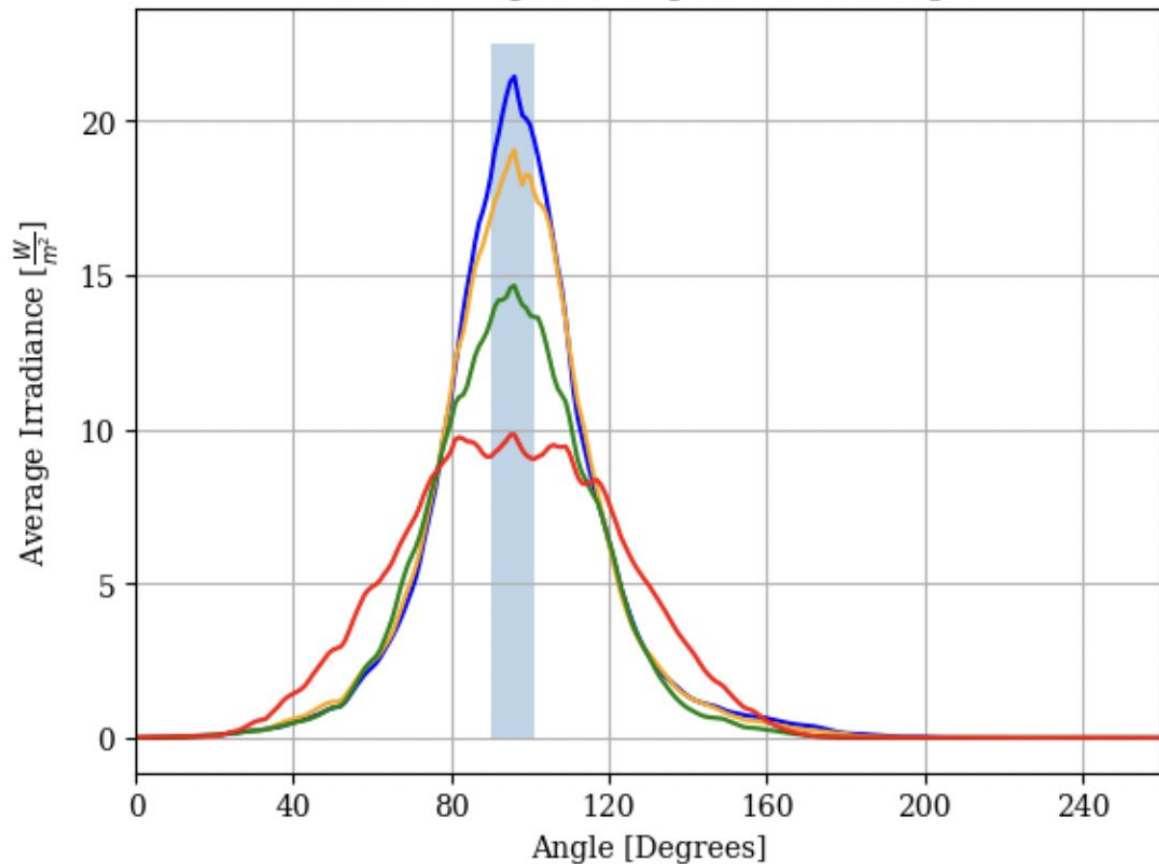


Averaged along radial axis

Averaged along azimuthal axis

# Angular Distribution of (Average) Irradiance

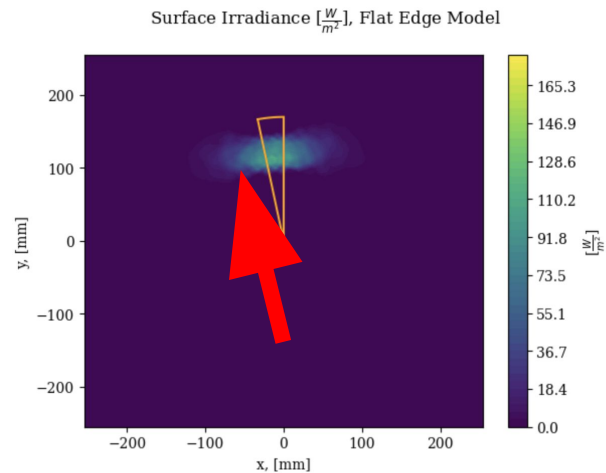
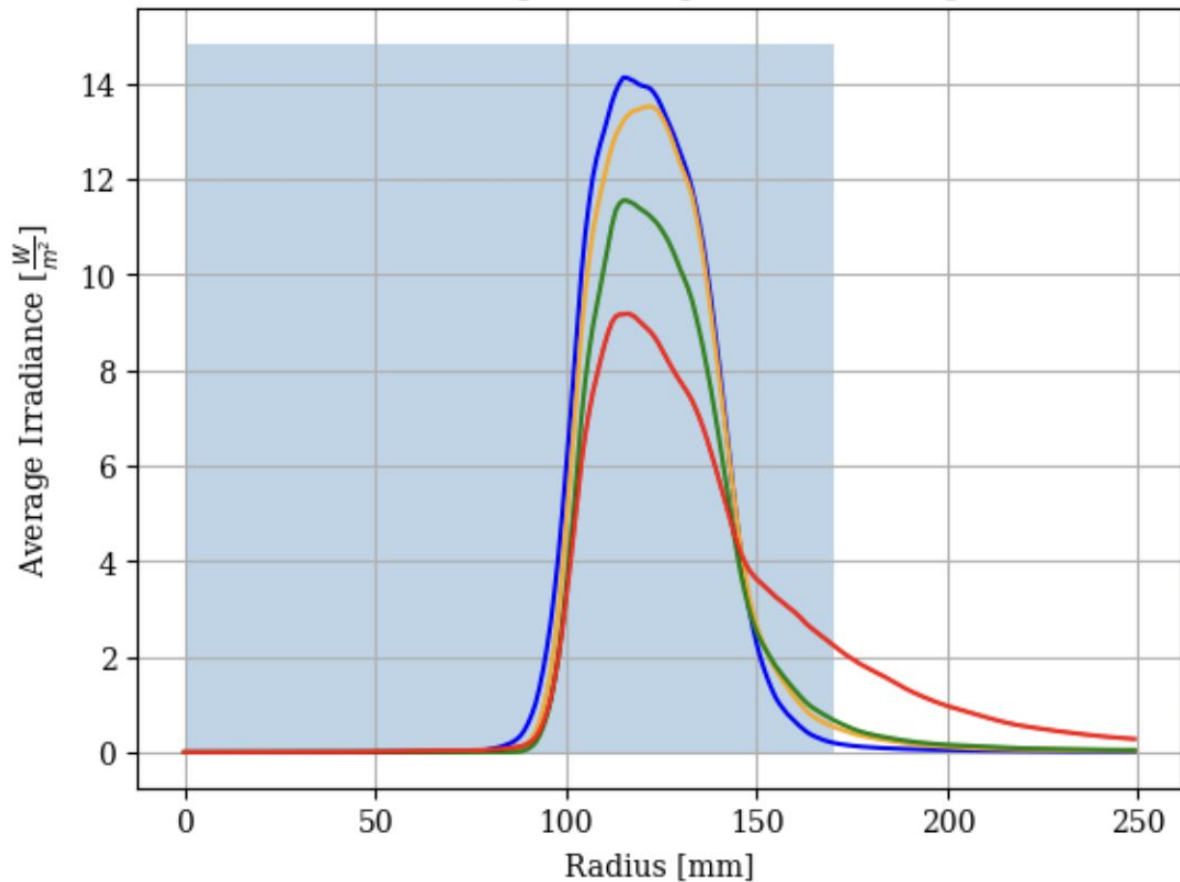
1/32 Unit Edge Coverings, Arc Model/Target



- Parabolic: 44.5259, 8.69, 0.313588
- Parabolic: 43.326, 5.5828
- Flat
- None
- Target

# Radial Distribution of (Average) Irradiance

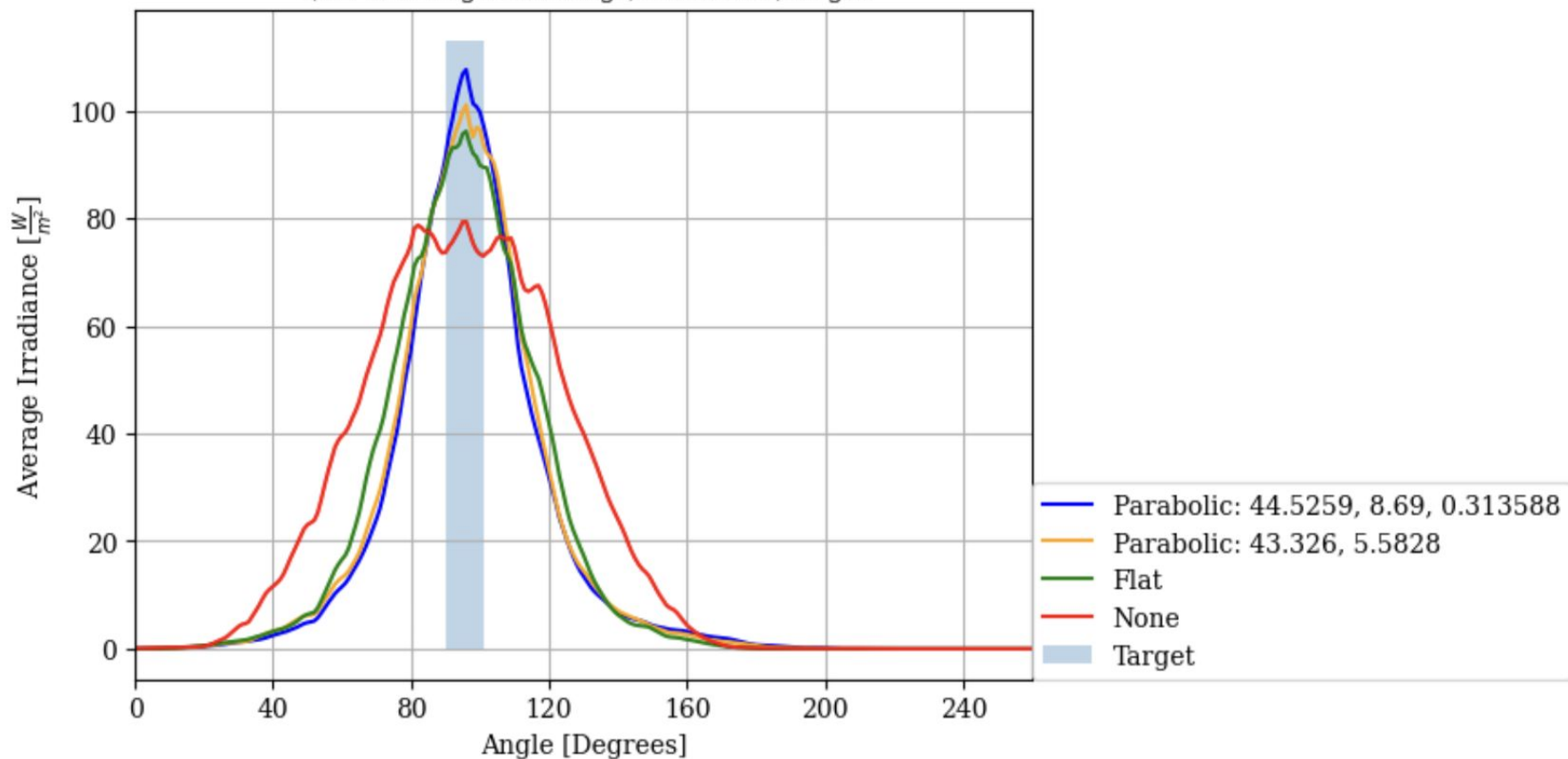
1/32 Unit Edge Coverings, Arc Model/Target



- Parabolic: 44.5259, 8.69, 0.313588
- Parabolic: 43.326, 5.5828
- Flat
- None
- Target

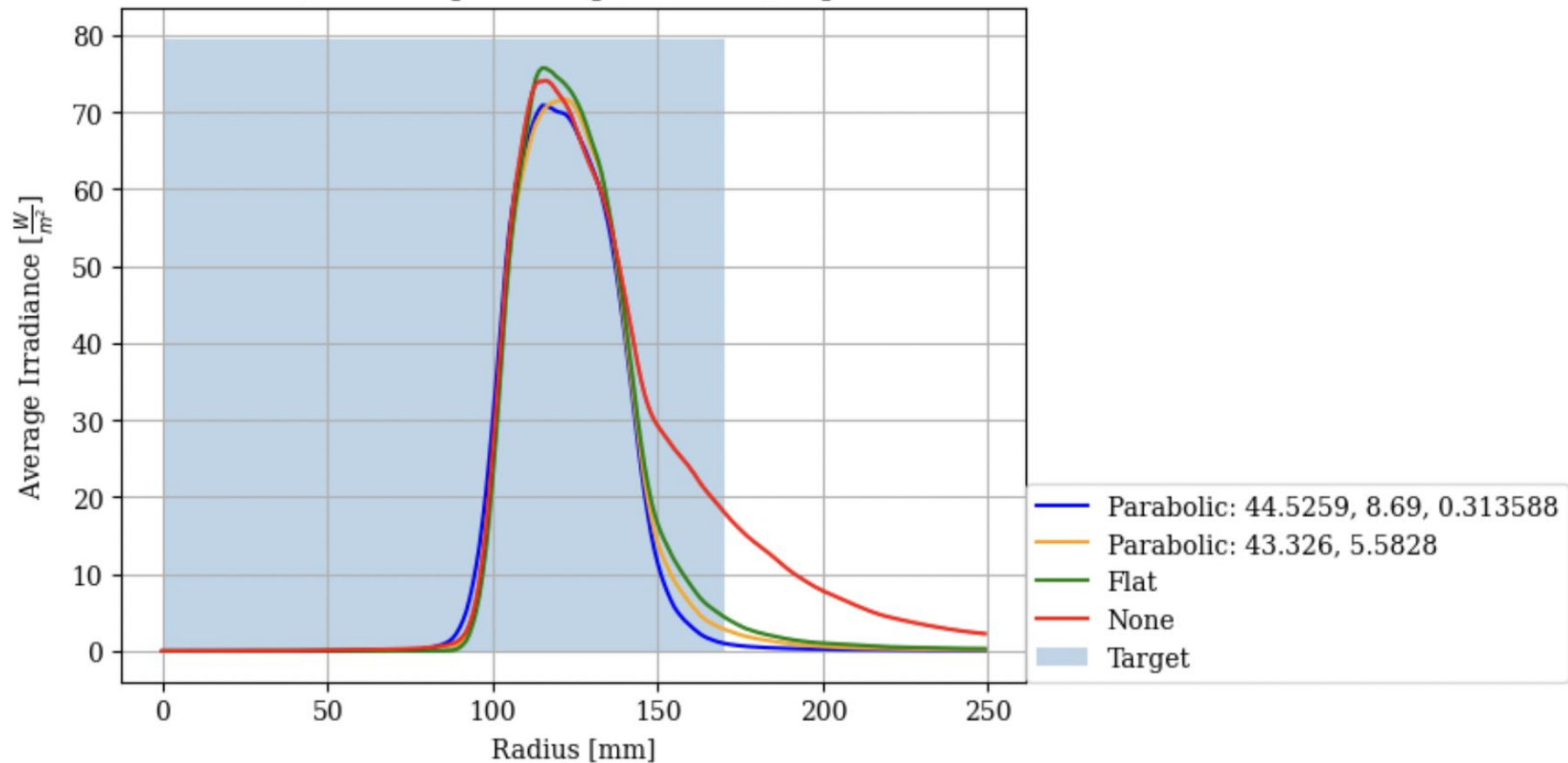
# Normalized [by Power] Angular Distribution of (Average) Irradiance

1/32 Unit Edge Coverings, Arc Model/Target

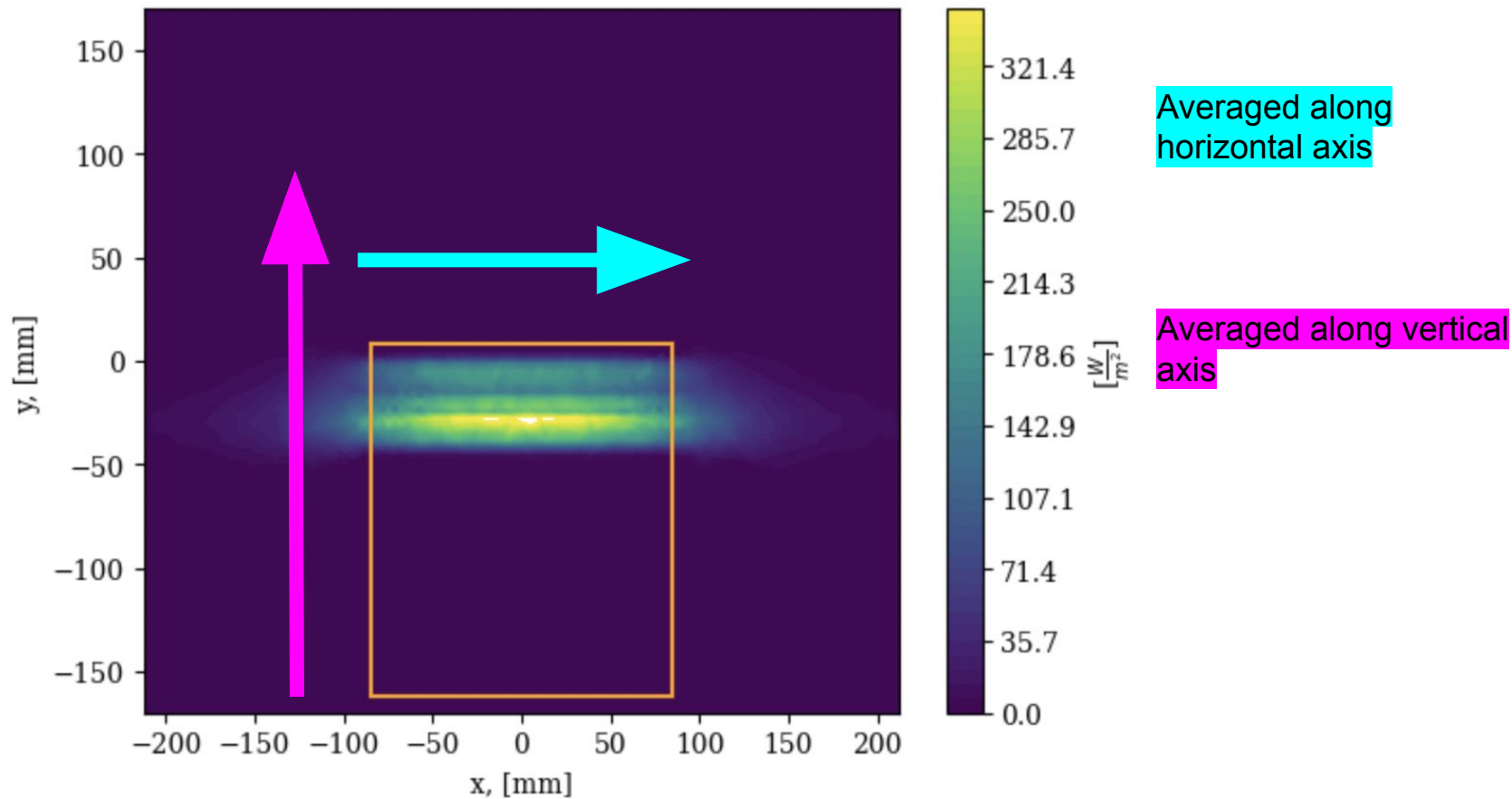


# Normalized [by Power] Radial Distribution of (Average) Irradiance

1/32 Unit Edge Coverings, Arc Model/Target

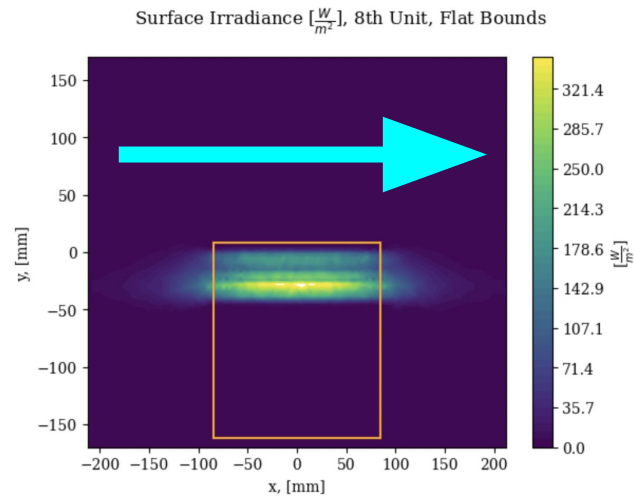
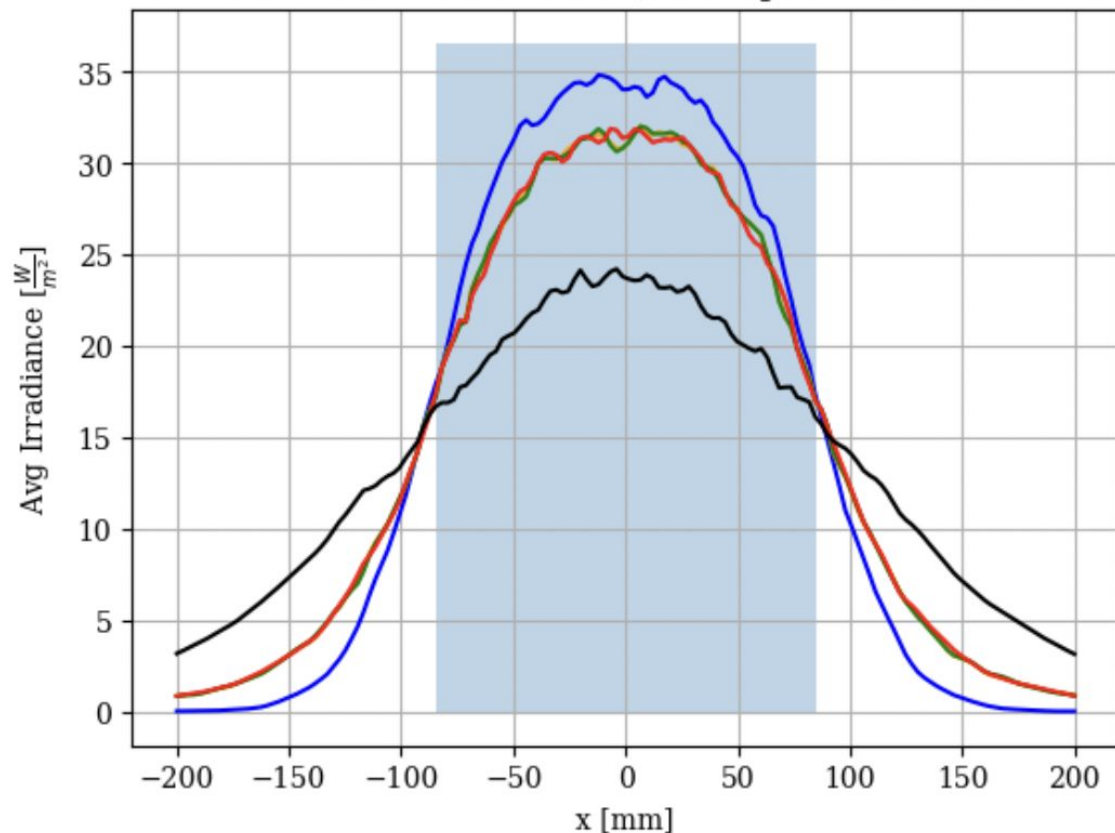


Surface Irradiance [ $\frac{W}{m^2}$ ], 8th Unit, Flat Bounds



# Average Horizontal Irradiance

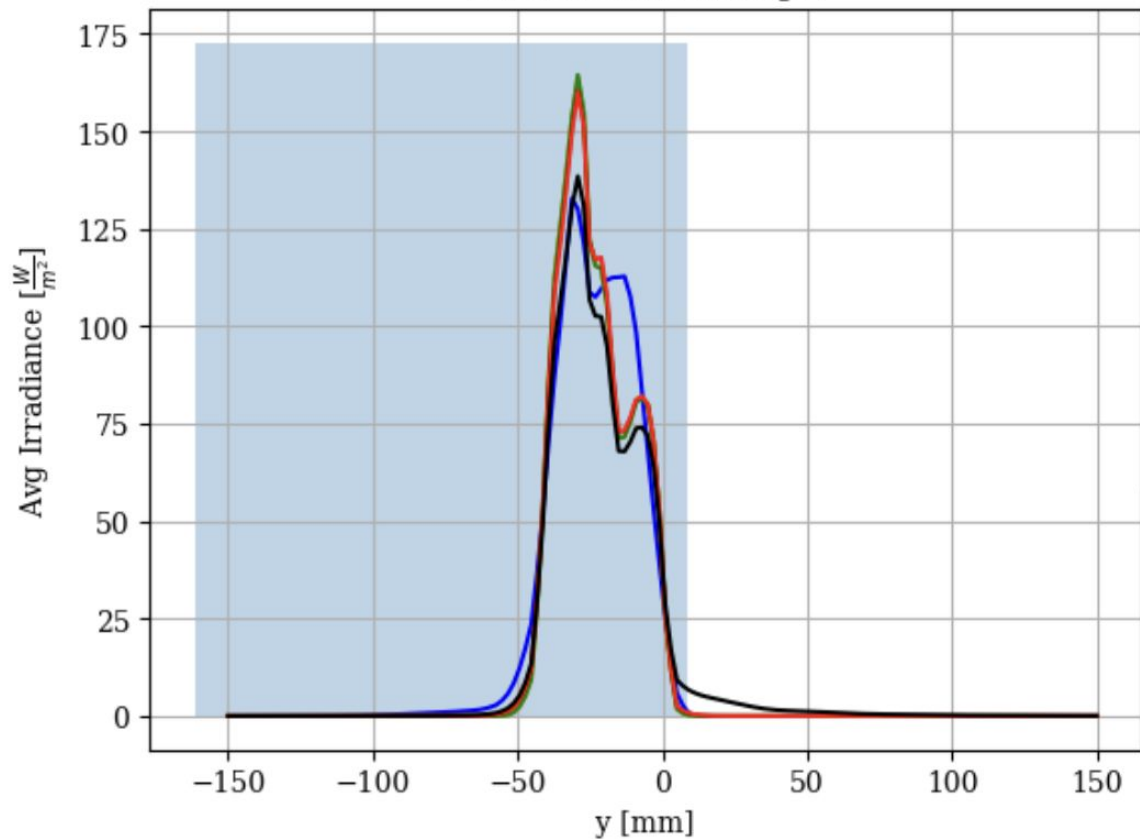
## Linear Model, 8th Target



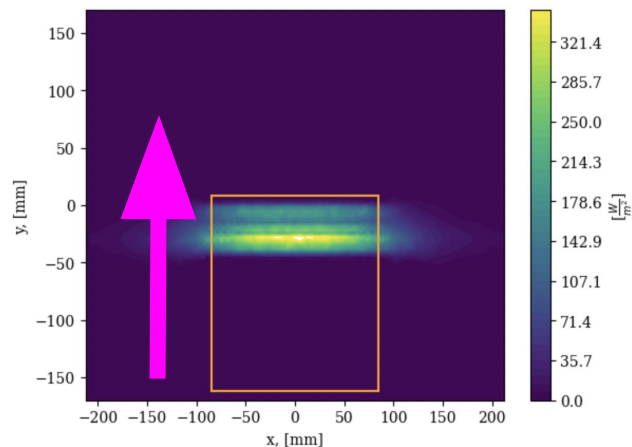
- 4 1/32nd Units, Optimized Parabola
- 8th Unit, Optimized Parabola, phi\_parab
- 8th Unit, Optimized Parabola
- 8th Unit, Flat Bounds
- 8th Unit, No Bounds
- Target, X Dimension

# Average Vertical Irradiance

## Linear Model, 8th Target



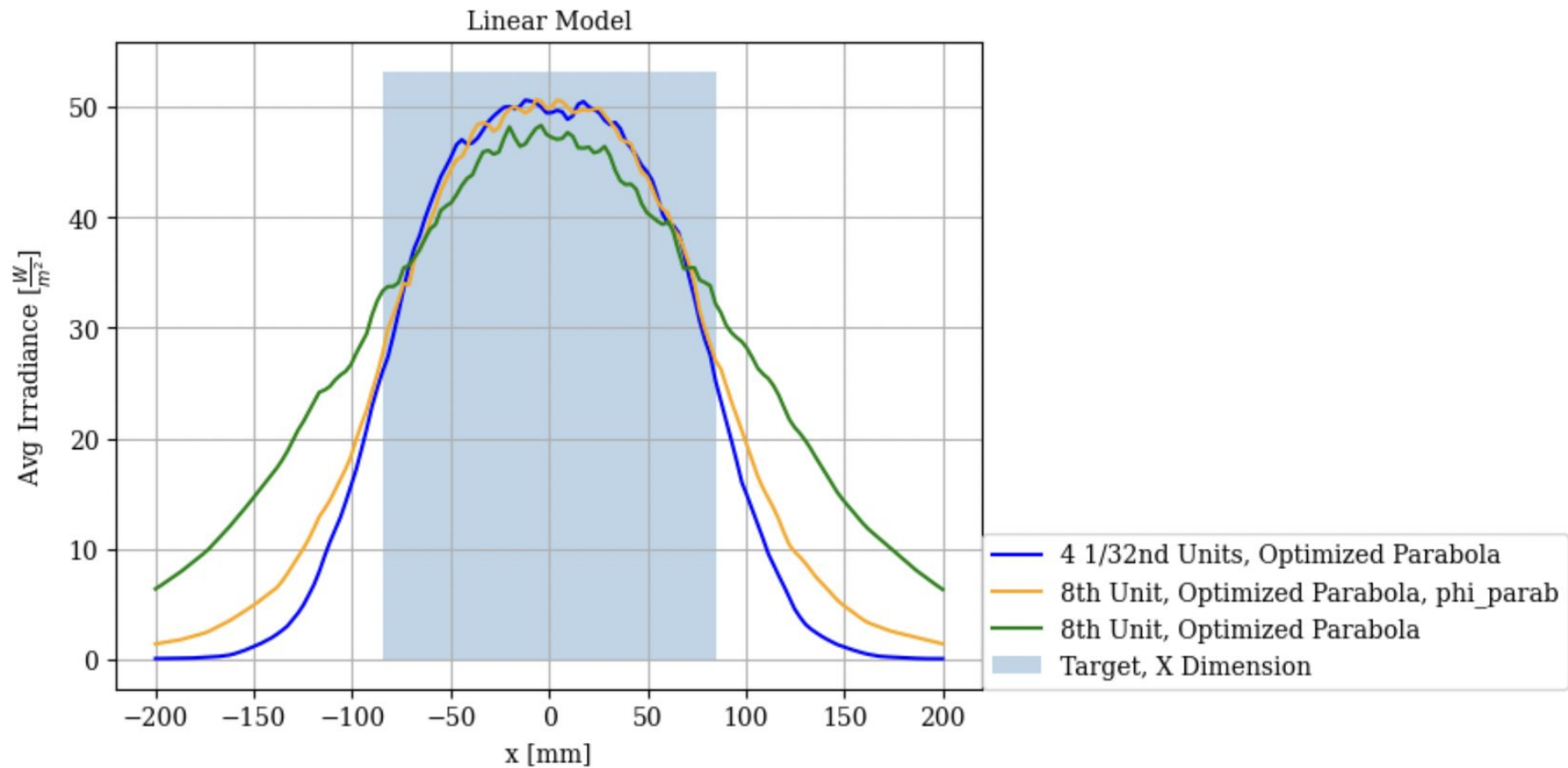
Surface Irradiance [ $\frac{W}{m^2}$ ], 8th Unit, Flat Bounds



- 4 1/32nd Units, Optimized Parabola
- 8th Unit, Optimized Parabola, phi\_parab
- 8th Unit, Optimized Parabola
- 8th Unit, Flat Bounds
- 8th Unit, No Bounds
- Target, Y Dimension



# Normalized [by Deposited Power] Average Horizontal Irradiance



# Normalized [by Deposited Power] Average Vertical Irradiance

Linear Model

